



The Forged Advantage

Stiletto Ultra Spindles are forged from Chromoly and heat-treated to provide maximum strength.



Available from leading suppliers and professional car builders.

Visit www.Pro-werks.com or call 231-873-9252.

www.pro-werks.com/categories/18997

The 'Swiss Watch' of Rack and Pinions

Stiletto
STEERING SYSTEMS



Gen 2 Pro-Box shown

The Standard of Excellence



Life started as a block of tough 2024-T4 billet aluminum.



The gear box housing is strong and beautiful. We've created a masterpiece.

The trusted finished assembly is known for smooth "Swiss Watch" movement and ease of use.



The rack and pinion are crafted of premium heat-treated alloy to AGMA specs.



World's Best Performance Steering

Built Without Compromise in the USA

Engineering, materials and craftsmanship are second to none. We charge only a little more to build Stiletto this way, but we think you will agree the performance advantages and piece of mind are worth it.

Stiletto's efficient aerospace spur gear pinion rolls effortlessly on sealed ball bearings.



Tough 2024-T4 billet aluminum throughout.

Stiletto's nylon interwoven neoprene boots are durable.

The competitor's helical pinion is forced into the rack resulting in undesirable resistance by design.



Cast aluminum housing.

The competitor's molded boots are easily torn.

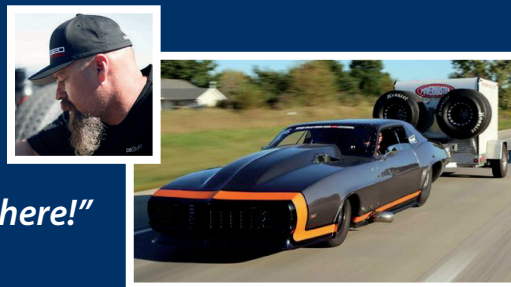
BRAND X

Stiletto

STEERING SYSTEMS

Purpose built

Tom Bailey, Owner/Driver
SICK SECONDS 2.0
2015 HOT ROD Drag Week Winner



"The best steering out there!"

Fast Ratio

6.4:1 ratio

The perfect choice for lightweight applications requiring very fast and responsive steering. The Magnum housing provides increased rigidity and torsional stiffness for long lasting gear alignment in abusive applications.



Dwarf/Mod-lite

10:1 ratio

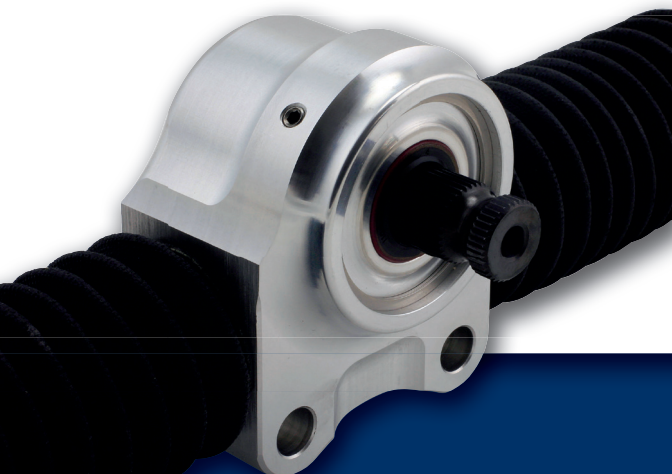
A proven winner for Dwarf / Mod-lite cars, these are well suited for many applications requiring a heavy duty steering box.



Small Box

12:1, 15:1 or 20:1 ratios

This compact design is a versatile and popular solution for many lightweight applications. Available in several ratios and rack lengths.



Gen 2 Pro-Box

20:1 ratio

Designed specifically for drag racing's full-bodied vehicle classes. The complete assembly only weighs 5 ¼ pounds.



Tim Fleenor, Crew Chief
BIG RED CAMARO
The Original Outlaw Racer



"Unlike others, we like that it steers effortlessly and there is no need for the complication of power steering. It's one of the components that has performed flawlessly in Big Red."



**Proudly
Made in the USA**

Also available in
Left Hand Drive