

STEERING & CONTROLS

STEERING SHAFT KITS

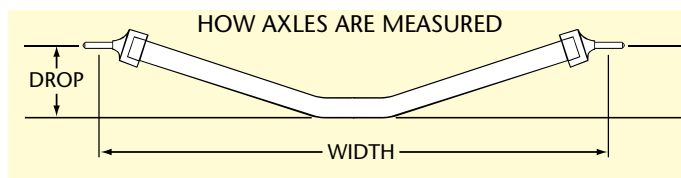
Two styles to choose from. Includes all the necessary components to fabricate a complete steering shaft assembly.



PART #	TUBE SIZE	TUBE LENGTH	STEER HUB	NYLON BUSHING	BUSHING SLEEVE	SPLINED U-JOINT	SPLINED COUPLER	ANTI-PUSH BACK	PRICE
C42-040	3/4" x .065"	(1) 42" L	(1) 3-BOLT	(1) 3/4"	(1)	(1) 5/8"-36	-	-	\$156.95
C42-036	5/8" x .065"	(1) 48" L (1) 72" L	(1) 4-BOLT	(2) 5/8"	(2)	-	(1) 5/8"-36	(1)	\$174.95

FRONT AXLE

Precision-machined chromoly axle is tig welded and spindle bosses are mounted at an 8 degree angle to accommodate spindles. Width dimension is measured from center of tire to center of tire. Drop dimension is measured from bottom of axle to centerline of spindle. Stiletto bosses measure 2" tall and SPE bosses are 1.875" tall.



DRAGSTER APPLICATIONS						
PART #	WIDTH	DROP	FLAT	BOSSSES	MATERIAL	PRICE
C42-447	39"	6"	6"	STILETTO	1-1/2" x .120"	\$167.95
C42-437	39"	6"	6"	SPE	1-1/2" x .120"	\$161.95
C42-448	36"	6"	6"	STILETTO	1-1/2" x .120"	\$167.95
C42-438	36"	6"	6"	SPE	1-1/2" x .120"	\$161.95

ALTERED APPLICATIONS						
PART #	WIDTH	DROP	FLAT	BOSSSES	MATERIAL	PRICE
C42-449	40"	-	40"	STILETTO	1-5/8" x .120"	\$162.95
C42-439	40"	-	40"	SPE	1-5/8" x .120"	\$157.95

ULTRA LIGHT WHEEL (17" DIA. X 1.875" WIDE)

These one piece hydro-formed aircraft aluminum halves are jig welded, finish machined, hand sanded, micro polished and weigh only 4 pounds each. Wheels accept most popular front 17" tires. These wheels are ideal for lightweight cars running 4 and 6 cylinder engines. Maximum vehicle weight is 800#.



THREE BAR FRONT END KIT

The three bar style front end is available in a kit complete with chromoly tubing, mounting tabs, inner bosses, grade 8 hardware, and spindle bosses.



Kit includes both sides, half of kit is shown.

PART #	DESCRIPTION	DETAIL	QTY. PER PACK	PRICE
C42-600	WHEEL	ULTRALIGHT	1	\$195.95
C42-615*	SAND TIRE	LIGHTWEIGHT	1	\$20.95
C42-620	TIRE TUBE	-	1	\$9.45
C42-624	DUST CAP	-	1	\$8.95
C42-625	BEARING SET	2.047" O.D., .984" I.D. (INNER), .625" I.D. (OUTER)	4	\$38.95
C42-626	BUSHING	-	1	\$7.65

*For lightweight sand application ONLY

DRAGSTER KIT			
PART #	TUBE DIA.	BOSSSES	PRICE
C42-443	3/4"	STILETTO (2" TALL)	\$150.25
C42-445	3/4"	SPE (1.875" TALL)	\$150.25

FRONT ENGINE KIT			
PART #	TUBE DIA.	BOSSSES	PRICE
C42-444	7/8"	STILETTO (2" TALL)	\$156.95
C42-446	7/8"	SPE (1.875" TALL)	\$156.95

PART #	DESCRIPTION	O.D. x I.D.	PRICE
C42-441	1" BOSS	5/8" x 5/16"	\$8.25
C42-442	1-1/4" BOSS	5/8" x 5/16"	\$8.25

FRONT SPINDLES

Spindles are available in high strength heat-treated forged chromoly. Bushings and thrust washers support the 8620 centerless ground king pins. Spindles are dimensionally the same as the English Ford Anglia. Each set includes (2) spindles, (2) bosses, (2) 5" arms, (2) king pins, and hardware.



PART #	DESCRIPTION	DETAIL	PRICE
C42-454	SPINDLE SET	CHROMOLY	\$289.86
C42-456-2	(2) SPINDLE BOSSES	.687" I.D. x 2"	\$24.59
C42-457	STEERING ARM	5" x 3/16"	\$13.81
C42-458	STEERING ARM	6" x 1/4"	\$18.83
C42-460	THRUST WASHER	.095" THICK	\$5.39
C42-465	KING PIN BUSHING, NEW STYLE	.687" I.D. x .782" O.D., STEEL BACKED	\$5.10
C42-461	KING PIN BUSHING, OLD STYLE W/ SHOULDER	.687" I.D. x .816" O.D., BRONZE TYPE	\$5.60
C42-462	SPINDLE NUT	5/18"-18	\$3.94
C42-463	KING PIN	.687" O.D. x 3"	\$16.20
C42-464	KING PIN, LONG	.687" O.D. x 4-1/4"	\$17.55

Note: All spindles listed on this page are .984" I.D. (Inner) and .625" I.D. (Outer). Steering arm length is measured from center of king pin to center of bolt hole. King pin angle is 8 degrees.

WELD-ON FRONT SPINDLE

CNC machined from 4130 chromoly, this spindle is ideal for custom suspension fabrication. Dimensionally the same as English Ford Anglia and uses # C42-462 Pro-werks Nut.



PART #	DESCRIPTION	QTY. PER PACK	PRICE
C42-585-2	WELD-ON SPINDLES	2	\$115.90
C42-462	SPINDLE NUT (5/8"-18)	1	\$3.94



TOW CAPS

Billet aluminum spindle caps allow quick and easy hook up of tow strap.



PART #	FITS SPINDLE	HOLES	BOLT PATTERN	QTY. PER PACK	PRICE
C42-477	STILETTO	1/4"	.890" x .890"	2	\$26.95
C42-478	SPE	1/4"	1" x 1"	2	\$26.95
C42-488	MW	5/16"	1.032" x 1.032"	2	\$26.95
C42-489	P&S	1/4"	.875" x .875"	2	\$26.95



BILLET WHEEL HUB

CNC machined from billet aluminum, hub fits the popular English Ford Anglia dimensional spindles commonly used on dragsters and funny cars. Accepts bolt-on style wheels. Drilled with multiple bolt patterns 4-1/2", 4-3/4", or 5" with 1/2"-20 threaded holes.



PART #	DESCRIPTION	QTY. PER PACK	PRICE
C42-590	BILLET WHEEL HUB	1	\$128.95
C42-592	BEARINGS & SEAL FOR ONE HUB	2 BEARINGS	\$79.95
C42-624	DUST CAP	1 SEAL	\$8.95



C42-362

BLOCK AND PIN U-JOINT

These non-sealed high alloy quality U-Joints are strong enough for moderate load applications. Not recommended for front engine or heavy load steering applications. They offer a 35 degree angle of operation.

PART #	DESCRIPTION	PRICE
C42-362	3/4" I.D. BORED x 3/4" I.D. BORED	\$51.95

HEAVY DUTY ROLLER BEARING U-JOINT

These durable and dependable smooth operating U-Joints are ideal for high load applications. They are sealed and offer a maximum of 32 degrees of operating angle.

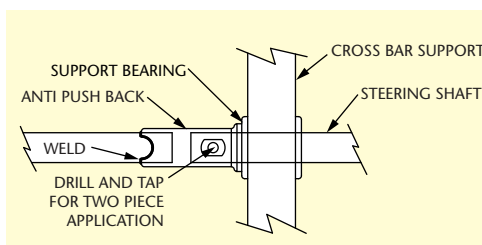


ANTI PUSH BACK

Available for 5/8" or 3/4" diameter shaft. Pilot drilled for two-piece shaft construction. Safety feature required by NHRA.



PART #	DIA.	PRICE
C42-350	5/8"	\$35.95
C42-351	3/4"	\$35.95

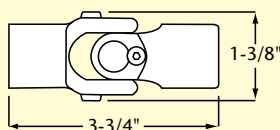


Anti Push Back when positioned in front of cross support limits steering column travel. Also can serve as coupler for two piece steering column if needed.

PART #	I.D. BORED x I.D. BORED	APPLICATION	PRICE
C42-365	5/8" x 5/8"	UNIVERSAL	\$54.95
C42-366	3/4" x 3/4"	UNIVERSAL	\$54.95

PART #	SPLINE x I.D. BORED	APPLICATION	PRICE
C42-368	9/16"-26 x 3/4"	PINTO RACK	\$54.95
C42-369	5/8"-38 x 3/4"	VEGA	\$54.95
C42-370	5/8"-36 x 3/4"	STILETTO RACK/ SPE FUNNY CAR	\$54.95
C42-372	3/4"-36 x 3/4"	CHEVY MAN/ PINTO POWER	\$54.95
C42-374	3/4"-30 x 3/4"	NEW CHEVY POWER	\$54.95
C42-376	13/16"-36 x 3/4"	CHEVY POWER	\$54.95
C42-378	1"-48 x 3/4"	GM STOCK	\$69.95

ROLLER BEARING
U-JOINT DIMENSIONS



13" STEERING WHEEL

All aluminum! The lightest steering wheel available - only 2 pounds. Durable foam grip is comfortable and extends onto spokes. Popular 3-bolt pattern is 1-3/4" bolt circle with 5/16" mount holes.



PART #	BOLT PATTERN	PRICE
C42-495	1-3/4" BOLT CIRCLE 5/16" DIA	\$75.95

BUTTERFLY STEERING WHEEL

Unique finger grips and ergonomic design ensure positive control. Heat-treated aluminum is precision CNC machined and micro-polished featuring smooth radius corners. Pre-drilled 4-bolt mounting hole option available with 3/16" diameter, .750" x 1.648" bolt pattern.



Measures 6-1/2" deep x 7-1/2" wide.



Optional button tab.

Add "D" to the end of part number for pre-drilled 4-bolt mounting holes. 3/16" dia., .750" x 1.648" bolt pattern.



Pre-drilled 4-bolt mounting hole option shown.

PART #	STYLE	GRIPS	PRICE
C42-482	STANDARD	POLISHED	\$88.95
C42-484	STANDARD	RED	\$88.95
C42-486	STANDARD	BLUE	\$88.95
C42-487	STANDARD	BLACK	\$88.95
C42-480	STANDARD	W/O GRIPS	\$54.45
C42-482-D	DRILLED	POLISHED	\$93.95
C42-484-D	DRILLED	RED	\$93.95
C42-486-D	DRILLED	BLUE	\$93.95
C42-487-D	DRILLED	BLACK	\$93.95
C42-480-D	DRILLED	W/O GRIPS	\$59.95
C42-482-B	STANDARD W/BUTTON TAB	POLISHED	\$88.95
C42-484-B	STANDARD W/BUTTON TAB	RED	\$88.95
C42-486-B	STANDARD W/BUTTON TAB	BLUE	\$88.95
C42-487-B	STANDARD W/BUTTON TAB	BLACK	\$88.95
C42-480-B	STANDARD W/BUTTON TAB	W/O GRIPS	\$54.45
C42-482-B-D	DRILLED W/BUTTON TAB	POLISHED	\$93.95
C42-484-B-D	DRILLED W/BUTTON TAB	RED	\$93.95
C42-486-B-D	DRILLED W/BUTTON TAB	BLUE	\$93.95
C42-487-B-D	DRILLED W/BUTTON TAB	BLACK	\$93.95
C42-480-B-D	DRILLED W/BUTTON TAB	W/O GRIPS	\$59.95

REPLACEMENT GRIPS

Four piece aluminum grip set fits Pro-works Butterfly Steering Wheel only. Includes stainless fasteners.

PART #	GRIPS	QTY. PER PACK	PRICE
C42-490	POLISHED	SET OF 4 PCS.	\$55.95
C42-491	RED	SET OF 4 PCS.	\$55.95
C42-492	BLUE	SET OF 4 PCS.	\$55.95
C42-493	BLACK	SET OF 4 PCS.	\$55.95



SWITCH PANEL

This panel enables multiple button and switch installation on all Pro-works Butterfly Steering Wheels. Panel is made from lightweight polished aluminum with stainless fasteners included. Ready to be drilled for choice of switches.

PART #	DESCRIPTION	PRICE
C42-479	BUTTERFLY STEERING WHEEL SWITCH PANEL	\$49.95



QUICK RELEASES

QUICK RELEASE STEERING HUB

Compact and lightweight hub features a built-in spring loaded release pin. The cupped non-skid release button provides one finger operation. Includes steel hex adapter that is bored with 5/8" I.D. hole. Precision CNC machined from aluminum, this hub meets 42.1 SFI spec.



PART #	DESCRIPTION	DETAIL	BOLT PATTERN	PRICE
C52-200	3 BOLT (WITH HEX)	1/4"	1.750"	\$79.95
C52-210	3 BOLT (WITH HEX)	5/16"	1.750"	\$79.95
C52-220	4 BOLT (WITH HEX)	3/16"	.750" x 1.648"	\$79.95
C52-230	UNDRILLED	2-5/8" DIA. FLANGE	-	\$79.95
C52-254	HEX SHAFT ONLY	5/8" I.D.	-	\$10.25

ADAPTER FLANGE

Converts any 3-bolt steering flange with 1-3/4" bolt circle using 5/16" diameter bolts. Flange is available for the Grant style 5-bolt or the Formula 9-bolt steering wheels.



PART #	FLANGE	BOLT CIRCLE	PRICE
C52-250	5 BOLT	2.835"	\$28.95
C52-251	9 BOLT	3.852"	\$28.95

ADAPTER STUB

Provides 5/8" O.D. for the hex adapter when using larger tubing. Universal stepped end accommodates 3/4", 7/8", or 1" diameter tubing with .065" wall thickness.

PART #	DESCRIPTION	PRICE
C52-260	ADPT STUB	\$9.45



QUICK RELEASE STEERING HUB

Anodized aluminum steering hub with special weld-on inner steel shaft. Spring-loaded quick release pin stays on the hub at all times. Popular 3-bolt pattern with 1-3/4" bolt circle uses 5/16" mount bolts.



PART #	DESCRIPTION	I.D.	PRICE
270-2017	HUB W/ HEX SHAFT	5/8"	\$31.40
270-2016	HUB W/ HEX SHAFT	3/4"	\$31.40
300-2020	HEX SHAFT ONLY	5/8"	\$8.67
300-2019	HEX SHAFT ONLY	3/4"	\$8.67

PRO BOX

The Pro Box is designed to replace the early Ford Pinto rack-n-pinion for new car construction. Polished aircraft billet aluminum construction with chromoly rack. Total rack travel of 4-3/4" with 3 turns at the pinion. Accepts 7/16" rod ends. The steering ratio is 20:1. Coupler included.



PART #	DESCRIPTION	DETAIL	PRICE
C42-332	PRO BOX	9/16"-26 SPLINE	\$420.32
C42-357	(2) REPL BOOTS W/ (4) SPRINGS	-	\$59.95
C42-403	COUPLER	9/16"-26 SPLINE x 3/4" BORED	\$16.46

PINTO RACK-N-PINION

This chrome unit is a direct replacement for a pinto rack. This OEM style unit has a total rack travel of 5.25" with 3.75 turns at the pinion. Front Steer application only. The steering ratio is 24.74:1. Coupler not included.



PART #	DESCRIPTION	DETAIL	PRICE
C42-400	PINTO RACK-N-PINION	9/16"-26 SPLINE, 3-7/8 TURNS	\$259.00
C42-403	COUPLER	9/16"-26 SPLINE x 3/4" BORED	\$16.46

PINTO RACK BRACKET

CNC machined billet aluminum bracket provides sanitary mounting of OEM style Pinto Rack-N-Pinion.



PART #	DESCRIPTION	PRICE
C42-404	BRACKET ONLY	\$65.95
C42-405	BRACKET W/ WELD ON MOUNTS	\$77.95



PINTO TIE ROD KIT

Weld-on tie rod kit is complete with rod ends and fasteners.

PART #	TUBES	ROD ENDS	FASTENERS	PRICE
C42-425	(2) 3/4" x .156" x 16" L	(2) 1/2"	INCLUDED	\$57.95

STEERING BEARING

Self-aligning sealed bearing provides for smooth operation. Available with polished billet aluminum cover for super clean appearance.



STEERING BEARING

REF	PART #	FITS SHAFT	PRICE
(A)	C73-080	3/4" DIA.	\$19.95
(A)	C73-081	7/8" DIA.	\$19.95
(A)	C73-082	1" DIA.	\$19.95

STEERING BEARING W/ BILLET COVER

REF	PART #	FITS SHAFT	PRICE
(B)	C73-080-B	3/4" DIA.	\$47.50
(B)	C73-081-B	7/8" DIA.	\$47.50
(B)	C73-082-B	1" DIA.	\$47.50

PART #	DESCRIPTION	PRICE
C73-085	BILLET COVER ONLY	\$27.95
C73-162	WELD-ON STEERING BRACKET	\$4.30



C73-162



C73-085



SELF-LUBRICATING BEARINGS

Both materials are ideally suited for low speed and medium load applications. Selection should be determined by size requirement.



NYLON BEARINGS

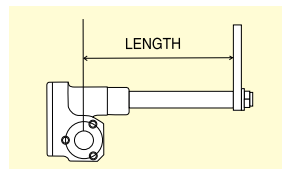
PART #	I.D.	FITS TUBE	QTY. PER PACK	PRICE
C42-095-2	5/8"	7/8" x .049	2	\$17.90
C42-096-2	3/4"	1" x .049	2	\$17.90

COMPOSITE BEARINGS

PART #	I.D.	FITS TUBE	QTY. PER PACK	PRICE
C52-090-2	5/8"	7/8" x .058	2	\$12.50
C52-092-2	3/4"	1-1/8" x .058	2	\$12.92
C52-094-2	7/8"	1-1/4" x .058	2	\$13.16
C52-096-2	1"	1-3/8" x .058	2	\$14.18
C52-098-2	1-1/4"	1-5/8" x .058	2	\$18.80

FUNNY CAR BOX

Billet aluminum housing provides superior strength and durability. Ideal for front engine applications such as altered, roadsters, and funny cars. Includes 5/8"-36 splined coupler and pitman arm. Total pinion rotation is 2-1/3 turns, 6-3/8" drag link movement.



PART #	STEERING BOX	LENGTH	PRICE
C42-390	STANDARD	12-1/4"	\$495.00
C42-391	LONG	14-3/8"	\$495.00

PART #	DESCRIPTION	DETAIL	PRICE
C42-353	SPLINED COUPLER	5/8"-36	\$12.51
C42-395	PITMAN ARM	5"	\$28.05



RACK-N-PINION

These lightweight, quality steering boxes are precision machined from high strength steel and billet aluminum. They are fitted with self-lubricating bronze bearings, pinion seal, and nylon reinforced neoprene boots. **Coupler Included.**



PART #	DESCRIPTION	ROD END BOLT CENTERLINE	ROD ENDS	RATIO	TOTAL PINION ROTATION	TOTAL RACK TRAVEL	LENGTH	SPLINED COUPLER	WEIGHT	PRICE
C42-336	RACK-N-PINION									
	(JR. DRAGSTER)	VERTICAL	5/16"	12:1	1-1/8 TURNS	3"	8-1/2"	5/8"-36	1.96#	\$230.02
C42-339	RACK-N-PINION	VERTICAL	3/8"	12:1	1-3/4 TURNS	4-1/2"	11-1/4"	5/8"-36	2.34#	\$241.45
C42-341	RACK-N-PINION									
	(LIGHTWEIGHT, ALL ALUM)	VERTICAL	3/8"	12:1	1-3/4 TURNS	4-1/2"	11-1/4"	5/8"-36	1.54#	\$263.84
C42-344	RACK-N-PINION	VERTICAL	3/8"	15:1	2-1/4 TURNS	4-3/4"	11-1/4"	5/8"-36	2.50#	\$263.84
C42-352	(2) REPL BOOTS W/ (4) WIRES	-	-	-	-	-	-	-	-	\$42.45
C42-353	SPLINED COUPLER	-	-	-	-	-	-	5/8"-36	-	\$12.51
C42-354	SPLIT BOLT COUPLER	-	-	-	-	-	-	9/16"-26	-	\$19.43



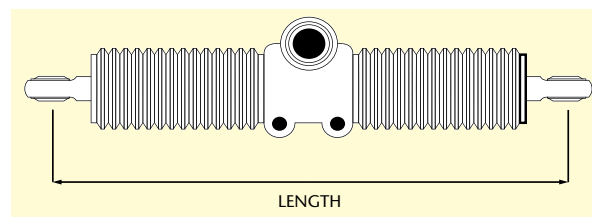
Vertical is only for rigid applications.

PART #	DESCRIPTION	ROD END BOLT CENTERLINE	ROD ENDS	RATIO	TOTAL PINION ROTATION	TOTAL RACK TRAVEL	LENGTH	SPLINED COUPLER	WEIGHT	PRICE
C42-340	RACK-N-PINION	HORIZONTAL	3/8"	12:1	1-3/4 TURNS	4-1/2"	11-1/4"	5/8"-36	2.34#	\$241.45



Horizontal is for suspended or rigid applications.

Choosing the right steering ratio for your application:
 12:1 Fast Ratio- Dragsters & Sand Buggies
 15:1 Medium Ratio- Roadsters & Altered



TIE ROD TUBE KIT

To be used with Rack-N-Pinion. Includes rod ends and fasteners.

PART #	TUBES	ROD ENDS	PRICE
C42-420*	(2) 3/4" DIA. X 18" L	(2) 3/8"	\$46.95
C42-421*	(2) 7/8" DIA. X 20" L	(2) 7/16"	\$51.95

* Add **\$40.00** for factory tig welding (c-c dimensions required).

**FAST RATIO RACK-N-PINION**

The ultra fast action of this rack-n-pinion is designed for small oval track or mini baja applications. Precision machined from high strength steel and billet aluminum. **Coupler included.**



PART #	DESCRIPTION	ROD END BOLT CENTERLINE	ROD ENDS	RATIO	TOTAL PINION ROTATION	TOTAL RACK TRAVEL	SPLINED LENGTH	COUPLER	WEIGHT	PRICE
C42-334	RACK-N-PINION	HORIZONTAL	3/8"	6.4:1	7/8 TURN	4-1/2"	11-1/4"	5/8"-36	2.74#	\$274.81
C42-352	(2) REPL BOOTS W/ (4) WIRES	-	-	-	-	-	-	-	-	\$42.45
C42-353	SPLINED COUPLER	-	-	-	-	-	-	5/8"-36	-	\$12.51

DWARF RACK-N-PINION

This compact heavy duty rack is machined from aircraft billet aluminum with chromoly rack. Features aluminum clevises. Versatile mounting allows for many applications. **Coupler included.**



PART #	DESCRIPTION	ROD END BOLT CENTERLINE	ROD ENDS	RATIO	TOTAL PINION ROTATION	TOTAL RACK TRAVEL	SPLINED LENGTH	COUPLER	WEIGHT	PRICE
C42-330	RACK-N-PINION	HORIZONTAL	1/2"	10:1	1-1/4 TURNS	3-7/8"	15"	5/8"-36	6.5#	\$330.31
C42-356	(2) REPL BOOTS W/ (4) WIRES	-	-	-	-	-	-	-	-	\$59.95
C42-355	SPLIT BOLT COUPLER	-	-	-	-	-	-	5/8"-36	-	\$19.43