

ELECTRICAL

STARTER RELAY

This starter relay permits the vertex magneto to be controlled by a standard automotive type ignition switch - making the extra ground switch unnecessary.



| PART # | DESCRIPTION | PRICE |
|----------|---------------|---------|
| V-925010 | STARTER RELAY | \$41.56 |

MAGNETO IGNITION WIRES

Universal red wire set includes eight ignition leads with spark plug boot on one end - other end for insertion into Vertex cap. Wire core is preferred for magneto applications. Fits both OXC and OAC versions.



V-070264



V-070260

| PART # | DESCRIPTION | PRICE |
|----------|-------------|---------|
| V-070264 | STRAIGHT | \$65.83 |
| V-070260 | 90 DEGREE | \$65.83 |

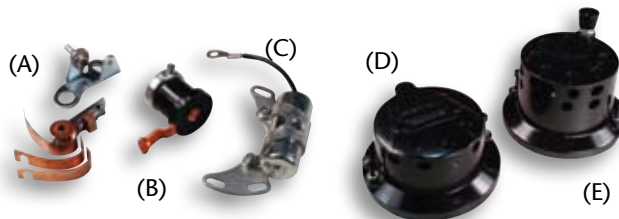
TIMING BOX

The latest in digital integrated circuitry is incorporated in this tool, for accurate initial timing setting of all magnetos.



| PART # | DESCRIPTION | PRICE |
|----------|-------------|---------|
| V-607980 | TIMING BOX | \$70.88 |

MAGNETO REPLACEMENT PARTS



| REF | PART # | DESCRIPTION | PRICE |
|-----|----------|-------------------|----------|
| (D) | V-916510 | OAC CAP, 4 CYL. | \$52.00 |
| (E) | V-916511 | OXC CAP, 4 CYL. | \$75.24 |
| (D) | V-916550 | OAC CAP, 8 CYL. | \$68.89 |
| (E) | V-916551 | OXC CAP, 8 CYL. | \$78.73 |
| - | V-911090 | OXC COIL | \$220.00 |
| (C) | V-912100 | CONDENSER | \$37.37 |
| (B) | V-916401 | ROTOR, 4 CYL. | \$25.90 |
| (B) | V-916402 | ROTOR, 8 CYL. | \$25.90 |
| (A) | V-906850 | CONTACT POINT SET | \$164.84 |
| (F) | V-602900 | DEGREE RING | \$31.59 |
| - | V-918030 | FIXED ADVANCE KIT | \$25.90 |



(F)

RACE CAR WIRING ASSEMBLY

This 8-circuit wiring harness with pre-terminated fuse block features heavy duty 30 amp relays for circuit applications including:

- Start
- Ignition
- Electric Fuel Pump #1
- Lights
- Electric Fan
- Electric Fuel Pump #2
- Accessory Circuit
- Electric Water Pump



| PART # | DESCRIPTION | PRICE |
|--------|--------------------------|----------|
| P50001 | RACE CAR WIRING ASSEMBLY | \$393.95 |

CHARGING SYSTEM SHUTDOWN RELAY KIT

Even with the master disconnect turned off, your engine may continue to run due to alternator feedback. This relay is installed between the alternator and the battery. When master disconnect is switched off, the relay is de-energized and stops current flow to the ignition system. Kit is supplied with all installation hardware and easy to follow installation instructions.



| PART # | DESCRIPTION | PRICE |
|--------|-----------------------|---------|
| P50103 | CHARGING SYSTEM RELAY | \$55.98 |

12 CIRCUIT FUSE CENTER

This street legal fuse center, designed and built especially for racing, locates the following fuses in one convenient location:

- Brake Lights
- Coil
- Dome Light
- Electric Fan
- Electric Fuel Pump
- Electric Water Pump
- Emergency Flashers
- Headlights
- Horn
- Instruments
- Radio
- Turn Signals
- Wipers

Features 10 gauge lead-in wire for powering-up circuits



| PART # | DESCRIPTION | PRICE |
|--------|----------------------|----------|
| P50101 | RACE CAR FUSE CENTER | \$197.67 |

LIGHTED AND FUSED SWITCH PANELS WITH COMPLETE WIRING SYSTEMS

Designed for racing applications, these panels feature lighted rocker switches and a heavy-duty, non-reflective, lightweight metal housing. Each switch function is screen-printed for quick visual reference. All circuits are individually fused with automotive blade-type fuses mounted on bottom of housing for quick testing and changing. May be dash or roll bar mounted.



| PART # | HEIGHT | WIDTH | DEPTH | # OF SWITCHES | SWITCH FUNCTIONS | PRICE |
|--------|--------|---------|--------|---------------|---|----------|
| P50301 | 3" | 5-3/4" | 3-1/8" | 4 | START, IGNITION, ACCESSORY*, ACCESSORY* | \$220.67 |
| P50302 | 3" | 8-1/4" | 3-1/8" | 6 | START, IGNITION, ELECTRIC FAN, FUEL PUMP/WATER PUMP, ACCESSORY*, ACCESSORY* | \$325.74 |
| P50303 | 3" | 10-3/4" | 3-1/8" | 8 | START, IGNITION, ELECTRIC FAN, FUEL PUMP#1*, FUEL PUMP#2*, WATER PUMP, LIGHTS, ACCESSORY* | \$394.41 |

* For safety, these switches are only powered on when the ignition is on.

UNIVERSAL FUEL PUMP RELAY KIT

Prevents voltage drops, while maintaining constant fuel pump pressure and saves electrical system damage from amperage overloads. Suggested for street applications and a must for racing

| PART # | DESCRIPTION | PRICE |
|--------|--------------------------|---------|
| P50102 | ELECTRIC FUEL PUMP RELAY | \$40.14 |



FUSED VERTICAL DRAGSTER SWITCH PANEL

With space in the dragster cockpit at a premium, the Vertical 6 Switch Dragster Control Center is the perfect solution. With a wafer-thin 1-1/2" width (15-1/2" length/2-1/2" depth), this self-contained control center mounts in virtually any position and provides immediate control of connected electrical functions. Switch functions include:

- Start
- Ignition
- Fuel Pump
- Water Pump
(fan & water pump/center off/water pump only)
- Accessory
- Accessory

Standard features include color-coded rocker switches that light up (except start) when pushed and screen printing on all switch functions on top and bottom for quick visual reference and to provide for a greater number of mounting configurations. Designed for easy hose clamp mounting (clamps not supplied), either vertically or horizontally, on the frame or rollbar.

| PART # | DESCRIPTION | PRICE |
|--------|-------------------------------|----------|
| P50506 | FUSED DRAGSTER 6-SWITCH PANEL | \$358.56 |



REPLACEMENT ROCKER SWITCHES

These replacement rocker switches work for all Painless switch panels or for special applications requiring the Painless sleek looking rocker switch. Available with or without lighting.

| PART # | DESCRIPTION | LIGHT | PRICE |
|--------|---------------------|-------------|---------|
| P80400 | MOMENTARY ON | NON-LIGHTED | \$12.18 |
| P80401 | ON/OFF | RED | \$13.92 |
| P80402 | ON/OFF/MOMENTARY ON | GREEN | \$17.63 |
| P80403 | ON/OFF/ON | RED | \$17.12 |
| P80404 | ON/OFF | AMBER | \$13.87 |
| P80405 | ON/OFF | BLUE | \$13.87 |



12-CIRCUIT FUSE CENTER

Now available for connection to your existing vehicle wiring, or for use as a starting point for custom wiring. This OEM specification-grade fuse block center is supplied with a mounting plate for fast, permanent installation. Includes wiring provisions for:

- Air Conditioning and/or Heat
- Brake Lights
- Coil (anti-theft feature)
- Dome Light
- Electric Fan
- Emergency Flashers
- Gauges/Dash Instruments
- Headlights
- Horn
- Radio (ignition hot)
- Turn Signals
- Wipers

| PART # | DESCRIPTION | PRICE |
|--------|-----------------------|----------|
| P30001 | 12CIRCUIT FUSE CENTER | \$147.24 |



WIRING



CIRKIT BOSS FUSE CENTERS

CirKit Boss Fuse Centers provide the ideal cost-effective solution when additional electrical circuits are required, or accessory equipment requires ignition hot and constant hot capabilities. **CirKit Boss is the only add-on fuse center available in the marketplace with ignition hot capabilities.** This safety feature ensures that your add-on circuits will only work if the ignition key is on.

| PART # | # OF CIRCUITS | TYPE OF CIRCUITS | PRICE |
|---------|---------------|----------------------------------|----------------|
| P70103* | 3 | 2 IGNITION HOT 1 CONSTANT HOT | \$52.67 |
| P70107* | 7 | 4 IGNITION HOT 3 CONSTANT HOT | \$66.59 |

* Ignition hot circuits are hot only when the key is turned on. Constant hot circuits are always hot.

CIRKIT BOSS WITH WEATHERPROOF KIT

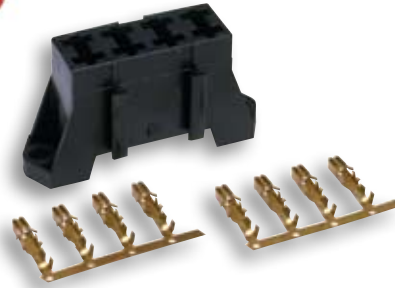
These new cirkit bosses offer the same features as the standard cirkit boss kit with weather sealed back and rubber fuse boot for additional protection.



4-CIRCUIT FUSE CENTER

This universal Fuse Block is supplied in easy-to-assemble kit form, and can be used for just about any automotive-type electrical application. Ideal for in-line wiring applications such as trailer wiring, or when adding vehicle accessories. Uses blade-type automotive fuses (not supplied), up to 30 amps.

PAINLESS



| PART # | DESCRIPTION | PRICE |
|--------|-----------------------|---------------|
| P30002 | 4-CIRCUIT FUSE CENTER | \$8.59 |

| PART # | # OF CIRCUITS | TYPE OF CIRCUITS | PRICE |
|---------|---------------|----------------------------------|----------------|
| P70203* | 3 | 2 IGNITION HOT 1 CONSTANT HOT | \$69.77 |
| P70207* | 7 | 4 IGNITION HOT 3 CONSTANT HOT | \$88.10 |

* Ignition hot circuits are hot only when the key is turned on. Constant hot circuits are always hot.

EXTREME CONDITION WIRE

Multi stranded copper core covered with cross-linked polyethylene insulation for superior abrasion resistance. Withstands over 275 degrees.



| PART # | GAUGE | COLOR | LENGTH | PRICE |
|--------|-------|----------|--------|----------------|
| P70700 | 10 | RED | 25' | \$18.64 |
| P70701 | 10 | BLACK | 25' | \$22.53 |
| P70800 | 14 | RED | 50' | \$23.31 |
| P70801 | 14 | BLACK | 50' | \$23.31 |
| P70802 | 14 | ORANGE | 50' | \$23.31 |
| P70803 | 14 | YELLOW | 50' | \$19.89 |
| P70804 | 14 | GREEN | 50' | \$20.11 |
| P70805 | 14 | BLUE | 50' | \$20.11 |
| P70806 | 14 | WHITE | 50' | \$20.11 |
| P70807 | 14 | GRAY | 50' | \$20.11 |
| P70808 | 14 | LT BLUE | 50' | \$28.93 |
| P70809 | 14 | LT GREEN | 50' | \$23.34 |
| P70810 | 14 | PINK | 50' | \$20.14 |

INDICATOR LAMP ASSEMBLIES

Replace that burned-out indicator light with an OEM-grade Indicator Lamp Assembly! Applications include turn signal indicators, high beam headlight indicator, "idiot lights," oil pressure, water temperature, etc. Available in 1/8" & 5/16" diameters with 5" long wire leads.



| PART # | DASH INDICATOR | | PRICE |
|--------|----------------|-------|---------------|
| | LIGHT | COLOR | |
| P80200 | 1/8" | AMBER | \$8.26 |
| P80201 | 1/8" | RED | \$7.68 |
| P80202 | 1/8" | GREEN | \$8.19 |
| P80203 | 5/16" | AMBER | \$7.58 |
| P80204 | 5/16" | RED | \$7.58 |
| P80205 | 5/16" | GREEN | \$7.58 |
| P80206 | 5/16" | BLUE | \$7.58 |



MASTER CUT-OFF SWITCH WITH LEVER

This heavy duty battery disconnect kit includes mount bracket and 18" long remote rod and tee handle.



| PART # | DESCRIPTION | PRICE |
|---------|----------------------------------|----------|
| C72-028 | MASTER CUT-OFF SWITCH WITH LEVER | \$104.95 |

MASTER CUT-OFF SWITCH WITH LEVER

This complete cut-off switch kit includes #C72-025 switch, lever, 18" long remote rod, and tee handle.



| PART # | DESCRIPTION | PRICE |
|---------|----------------------------------|---------|
| C72-027 | MASTER CUT-OFF SWITCH WITH LEVER | \$76.95 |
| C72-026 | LEVER ONLY | \$15.95 |

MASTER CUT-OFF SWITCH

Spliced into the positive battery cable, this heavy-duty switch positively shuts off all electrical current. Rated at 175 amps continuous, this type of switch is required by most sanctioning bodies.



| PART # | DESCRIPTION | PRICE |
|---------|-----------------------|---------|
| C72-025 | MASTER CUT-OFF SWITCH | \$42.89 |

QUICK CONNECT TERMINAL KITS

Make your own locking quick connect plugs easily and quickly. Each kit is supplied with one male and one female connector and the appropriate number of quick connect wire terminals. Now available in Standard or Weatherproof style.



| STANDARD WIRE | | |
|---------------|----------|---------|
| PART # | CAPACITY | PRICE |
| P40006 | 2 | \$4.69 |
| P40007 | 3 | \$6.18 |
| P40008 | 4 | \$6.93 |
| P40009 | 6 | \$7.31 |
| P40010 | 9 | \$7.73 |
| P40011 | 12 | \$9.73 |
| P40012 | 15 | \$10.03 |

| WEATHERPROOF WIRE | | |
|-------------------|----------|---------|
| PART # | CAPACITY | PRICE |
| P70401 | 1 | \$11.94 |
| P70402 | 2 | \$8.30 |
| P70403 | 3 | \$10.05 |
| P70404 | 4 | \$11.86 |
| P70406 | 6 | \$14.67 |

JAMB TAG WIRELESS CONNECTORS

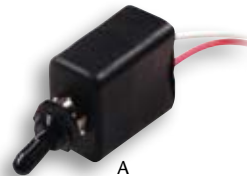
No more running wires through doorjamb when installing your stereo system, power windows, or power locks! Mounts anywhere on doorjamb.



| PART # | CONTACT | PRICE |
|--------|---------|---------|
| P40021 | ONE | \$22.34 |
| P40022 | TWO | \$27.52 |
| P40023 | THREE | \$34.70 |
| P40024 | FOUR | \$45.09 |

WATERPROOF SWITCHES

Long life 12 volt toggle switches are waterproof, sealed and include dust boot. Rated at 20 amps.

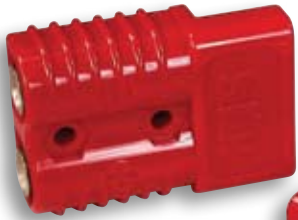


| REF | PART # | DESCRIPTION | DETAIL | PRICE |
|-----|--------|-----------------------|-------------------|---------|
| | P80503 | PUSH BUTTON START | - | \$18.18 |
| (A) | P80530 | ON/OFF SINGLE POLE | WATERPROOF TOGGLE | \$34.70 |
| (A) | P80532 | ON/OFF/ON SINGLE POLE | WATERPROOF TOGGLE | \$34.30 |
| (A) | P80533 | ON/OFF DOUBLE POLE | WATERPROOF TOGGLE | \$39.23 |
| (A) | P80534 | ON/OFF/ON DOUBLE POLE | WATERPROOF TOGGLE | \$46.03 |
| - | P80520 | TOGGLE SWITCH BOOT | REPLACEMENT | \$9.34 |

WIRING

BATTERY COUPLER

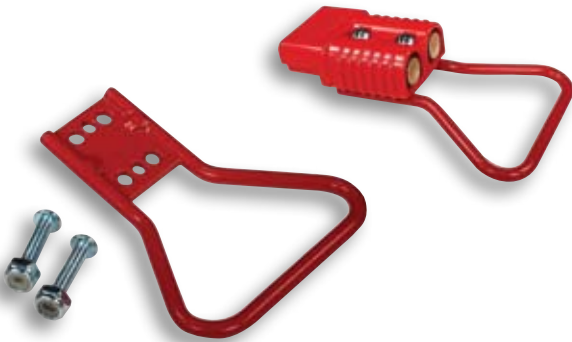
This quick-disconnect battery coupler is compact and easily connected. Bright red with 175 amp, 600 volt maximum capacity, measures 2-1/8"W x 3-1/8"L x 1"H.



C72-021



C72-023



C72-029



| PART # | DESCRIPTION | QTY. PER PACK | PRICE |
|---------|------------------|---------------|---------|
| C72-020 | BATTERY COUPLER | 1 | \$13.95 |
| C72-021 | BATTERY COUPLERS | 2 | \$27.90 |
| C72-023 | DUST COVER | 1 | \$10.95 |
| C72-029 | HANDLE | 1 | \$19.50 |
| C72-024 | *COMPLETE KIT | 1 | \$58.35 |

*Includes (2) battery couplers, (1) dust cover, and (1) handle.

REMOTE BATTERY TERMINALS

May be positioned inside or outside of car for convenient connection to battery charger. Accepts 6 to 36 volts. Includes 1 positive (red) and 1 negative (black).



C72-022



| PART # | DESCRIPTION | PRICE |
|---------|--------------------------|---------|
| C72-022 | REMOTE BATTERY TERMINALS | \$45.63 |



TRADITIONAL SERIES CHROME BEZEL DESIGN

2-1/16" MECHANICAL & ELECTRICAL GAUGES

The traditional chrome design is ideal for race applications with size constraints or custom car builders. Available in both mechanical or electrical movements, the mechanical gauges offer a full 270° sweep dial. **Electrical gauges include the necessary senders.** Gauges can be panel mounted or installed in optional chrome mounting cups.

| 2-1/16" MECHANICAL GAUGES | | |
|---------------------------|---|----------|
| PART # | DESCRIPTION | PRICE |
| 2401 | BOOST/ VACUUM (30" HG/20 PSI) | \$64.95 |
| 2411 | FUEL PRESSURE (0-15 PSI) | \$57.32 |
| 2412 | FUEL PRESSURE (0-100 PSI) | \$59.87 |
| 2413 | FUEL PRESSURE WITH ISOLATOR (0-15#) | \$171.95 |
| 2421 | OIL PRESSURE (0-100 PSI) | \$58.28 |
| 2422 | OIL PRESSURE (0-200 PSI) | \$58.30 |
| 2431 | WATER TEMPERATURE (140°-280° F.) 6' CAP TUBE | \$83.12 |
| 2432 | WATER TEMPERATURE (120°-240° F.) 6' CAP TUBE | \$86.10 |
| 2433 | WATER TEMPERATURE (120°-240° F.) 12' CAP TUBE | \$93.63 |
| 2441 | OIL TEMPERATURE (140°-280° F.) 6' CAP TUBE | \$86.10 |
| 2484 | VACUUM (30" HG) | \$58.42 |

| 2-1/16" ELECTRICAL GAUGES | | |
|---------------------------|--|---------|
| PART # | DESCRIPTION | PRICE |
| 2514* | FUEL LEVEL (0 OHMS EMPTY/ 90 OHMS FULL) | \$47.47 |
| 2515* | FUEL LEVEL (73 OHMS EMPTY/ 8-12 OHMS FULL) | \$47.47 |
| 2516** | FUEL LEVEL (240 OHMS EMPTY/ 33 OHMS FULL) | \$47.47 |
| 2522 | OIL PRESSURE (0-100 PSI) | \$72.51 |
| 2532 | WATER TEMPERATURE (100°-250° F.) | \$55.59 |
| 2536 | CYLINDER HEAD TEMPERATURE (140°-340° F.) | \$34.43 |
| 2542 | OIL TEMPERATURE (100°-250° F.) | \$55.77 |
| 2543 | OIL TEMPERATURE (140°-300° F.) | \$55.77 |
| 2552 | TRANSMISSION TEMPERATURE (100°-250° F.) | \$55.77 |
| 2586*** | AMMETER (60-0-60 AMPS) | \$48.35 |
| 2585 | CLOCK QUARTZ MOVEMENT (12 VOLTS) | \$77.75 |
| 2587 | HOURMETER (8-32 VOLTS DC INPUT) | \$60.01 |
| 2592 | VOLTMETER (8-18 VOLTS) | \$46.34 |

* Uses vehicle's stock sender. #2514 fits most GM. #2515 fits most Ford & Chrysler.

** Uses Part # 3262 fuel level sender (not included).

*** CAUTION: Use only on alternators with output of 60 amps or less. Higher output alternators must use voltmeter. Must be installed by experienced mechanic.



2411



2412



2421



2441



2514



2587

PRESSURE GAUGE ADAPTERS

Each adapter has a female 1/8" NPT thread in the hex to accept a pressure gauge or adapter fitting.



| PART # | DESCRIPTION | NPT IN HEX | PRICE |
|--------|--------------------|------------|---------|
| 100192 | 6 MALE TO 6 MALE | 1/8" | \$11.32 |
| 100193 | 6 MALE TO 1/4" NPT | 1/8" | \$11.32 |
| 100194 | 6 MALE TO 3/8" NPT | 1/8" | \$11.32 |
| 100196 | 8 MALE TO 8 MALE | 1/8" | \$13.23 |
| 100197 | 8 MALE TO 1/4" NPT | 1/8" | \$13.23 |
| 100198 | 8 MALE TO 3/8" NPT | 1/8" | \$13.23 |



LIQUID FILLED FUEL PRESSURE GAUGE

Now you can really know what your fuel pressure is at a glance, with this new easy to read 0-15 psi fuel pressure gauge. Liquid filled for vibration resistance. 1/8" NPT male thread is designed to fit on Pressure Gauge Adapter.



1-1/2" Body Dia.

FI FUEL PRESSURE GAUGE

Direct Mount, 0-100 PSI pressure gauge. White 1 1/2" face with 1/8th" NPT male thread.



| PART # | DESCRIPTION | PRICE |
|--------|-------------|---------|
| 2177 | FUEL GAUGE | \$35.95 |

| PART # | DESCRIPTION | PRICE |
|--------|-------------|---------|
| 100189 | FUEL GAUGE | \$44.12 |

GAUGES

SPORT COMP SERIES

2-1/16" & 2-5/8" MECHANICAL & ELECTRICAL GAUGES

The trademarked competition appearance and rugged, reliable performance have made these gauges the standard in racing today. The bold, easy to read dial faces include florescent red pointers for quick-glance monitoring. The electrical gauges now include a rugged air core meter movement for maximum accuracy and quick response time. Electrical gauges include the necessary sensors.



MECHANICAL GAUGES

| 2-1/16" | PRICE | 2-5/8" | PRICE | DESCRIPTION | DETAIL |
|---------|----------|--------|----------|---------------------------|----------------------------|
| 3301 | \$67.45 | 3401 | \$72.01 | BOOST/ VACUUM 30" | HG/20 PSI |
| - | - | 3402 | \$72.01 | BLOWER PRESSURE | 0-60 PSI |
| - | - | 3404 | \$72.01 | BOOST | 0-35 PSI |
| 3311 | \$60.46 | 3411 | \$60.01 | FUEL PRESSURE | 0-15 PSI |
| 3312 | \$62.80 | 3412 | \$63.04 | FUEL PRESSURE | 0-100 PSI |
| 3313 | \$174.22 | 3413 | \$175.41 | FUEL PRESSURE W/ ISOLATOR | 0-15 PSI |
| 3321 | \$59.02 | 3421 | \$60.39 | OIL PRESSURE | 0-100 PSI |
| 3322 | \$61.16 | 3422 | \$63.59 | OIL PRESSURE | 0-200 PSI |
| 3331 | \$85.33 | 3431 | \$88.92 | WATER TEMPERATURE | 140°-280° F., 6' CAP TUBE |
| 3332 | \$88.23 | 3432 | \$91.64 | WATER TEMPERATURE | 120°-240° F., 6' CAP TUBE |
| 3333 | \$95.21 | 3433 | \$98.29 | WATER TEMPERATURE | 120°-240° F., 12' CAP TUBE |
| - | - | 3435 | \$65.37 | TEMPERATURE | 140°-340° F., 6' CAP TUBE |
| 3341 | \$88.23 | 3441 | \$92.76 | OIL TEMPERATURE | 140°-280° F., 6' CAP TUBE |
| - | - | 3443 | \$98.29 | OIL TEMPERATURE | 140°-280° F., 12' CAP TUBE |
| 3351 | \$90.33 | 3451 | \$93.49 | TRANSMISSION TEMPERATURE | 140°-280° F., 8' CAP TUBE |
| 3384 | \$62.06 | 3484 | \$61.68 | VACUUM | 30" HG |



ELECTRICAL GAUGES

| 2-1/16" | PRICE | 2-5/8" | PRICE | DESCRIPTION | DETAIL |
|---------|---------|---------|---------|---------------------------|-------------------------------|
| 3314 | \$49.16 | 3514 | \$57.49 | FUEL LEVEL | 0 OHMS EMPTY/ 90 OHMS FULL |
| 3315 | \$49.16 | 3515 | \$57.49 | FUEL LEVEL | 73 OHMS EMPTY/ 8-12 OHMS FULL |
| 3316** | \$49.16 | 3516** | \$57.49 | FUEL LEVEL | 240 OHMS EMPTY/ 33 OHMS FULL |
| - | - | 3262 | \$46.08 | FUEL LEVEL SENDER | 240 OHMS EMPTY/ 33 OHMS FULL |
| 3327 | \$77.63 | 3522 | \$80.01 | OIL PRESSURE | 0-100 PSI |
| 3337 | \$58.64 | 3531 | \$66.70 | WATER TEMPERATURE | 100°-250° F. |
| 3336 | \$58.64 | 3536 | \$69.60 | CYLINDER HEAD TEMPERATURE | 140°-340° F. |
| 3347 | \$58.64 | 3542 | \$69.60 | OIL TEMPERATURE | 100°-250° F. |
| 3348 | \$58.64 | 3543 | \$69.60 | OIL TEMPERATURE | 140°-300° F. |
| 3357 | \$58.64 | 3552 | \$69.60 | TRANSMISSION TEMPERATURE | 100°-250° F. |
| - | - | 3586*** | \$70.28 | AMMETER | 60-0-60 AMPS |
| 3391 | \$49.87 | 3592 | \$59.16 | VOLTMETER | 8-18 VOLTS |

** Uses Part # 3262 fuel level sender (not included).

*** Caution: Use only on alternators with output of 60 amps or less. Higher output alternators must use voltmeter. Must be installed by an experienced mechanic.



BOOST MEMORY KIT

This compact kit accurately records maximum reading on all boost and blower gauges, this allows you to concentrate on driving and not watching the gauge. Kit is easily reset and is not influenced by vibration or fuel vapor. All fittings are 1/8" NPT.



| PART # | DESCRIPTION | PRICE |
|---------|------------------|---------|
| C76-165 | BOOST MEMORY KIT | \$46.25 |
| C76-166 | RELIEF VALVE | \$23.80 |
| C76-167 | CHECK VALVE | \$20.60 |

PRO COMP SERIES

2-5/8" MECHANICAL & ELECTRICAL GAUGES

Pro Comp liquid-filled mechanical gauges are designed for racing applications with extreme vibrations or violent pounding. The bourdon tube gauge mechanism is encased in a special dampening fluid that not only provides steadiness to the pointer but also adds longer life to the instrument. Pro Comp electric gauges include a rugged air core meter movement and are the ideal choice for applications where routing electric wires are required.

| LIQUID FILLED MECHANICAL GAUGES | | | |
|---------------------------------|---------------------------|---------------------------|-----------------|
| PART # | DESCRIPTION | DETAIL | PRICE |
| 5401 | BOOST/ VACUUM | 30" HG/ 20 PSI | \$88.50 |
| 5402 | BLOWER PRESSURE | 0-60 PSI | \$88.50 |
| 5404 | BOOST | 0-35 PSI | \$88.50 |
| 5405 | BLOWER PRESSURE | 0-100 PSI | \$55.22 |
| 5411 | FUEL PRESSURE | 0-15 PSI | \$88.50 |
| 5412 | FUEL PRESSURE | 0-100 PSI | \$88.50 |
| 5413 | FUEL PRESSURE W/ ISOLATOR | 0-15 PSI | \$201.72 |
| 5421 | OIL PRESSURE | 0-100 PSI | \$82.38 |
| 5422 | OIL PRESSURE | 0-200 PSI | \$84.46 |
| 5423 | PRESSURE | 0-300 PSI | \$86.74 |
| 5424 | PRESSURE | 0-400-PSI | \$91.12 |
| 5425 | PRESSURE | 0-600-PSI | \$92.66 |
| 5426 | BRAKE PRESSURE | 0-2000 PSI | \$117.10 |
| 5431 | WATER TEMPERATURE | 140°-280° F, 6' CAP TUBE | \$126.68 |
| 5432 | WATER TEMPERATURE | 120°-240° F, 6' CAP TUBE | \$128.66 |
| 5433 | WATER TEMPERATURE | 120°-240° F, 12' CAP TUBE | \$135.19 |
| 5435 | TEMPERATURE | 140°-340° F, 8' CAP TUBE | \$130.87 |
| 5441 | OIL TEMPERATURE | 140°-280° F, 6' CAP TUBE | \$128.66 |
| 5443 | OIL TEMPERATURE | 140°-280° F, 12' CAP TUBE | \$135.19 |
| 5451 | TRANSMISSION TEMPERATURE | 140°-280° F, 8' CAP TUBE | \$130.53 |
| 5484 | VACUUM | 30" HG | \$81.93 |



| ELECTRICAL GAUGES | | | |
|-------------------|--------------------------|-------------------------------|----------------|
| PART # | DESCRIPTION | DETAIL | PRICE |
| 5415* | FUEL LEVEL | 0 OHMS EMPTY/ 90 OHMS FULL | \$56.68 |
| 5416* | FUEL LEVEL | 73 OHMS EMPTY/ 8-12 OHMS FULL | \$56.68 |
| 5417** | FUEL LEVEL | 240 OHMS EMPTY/ 33 OHMS FULL | \$56.68 |
| 3262 | FUEL LEVEL SENDER | 240 OHMS EMPTY/ 33 OHMS FULL | \$46.08 |
| 5427 | OIL PRESSURE | 0-100 PSI | \$83.55 |
| 5437 | WATER TEMPERATURE | 100°-250° F. | \$69.15 |
| 5447 | OIL TEMPERATURE | 140°-300° F. | \$72.38 |
| 5457 | TRANSMISSION TEMPERATURE | 100°-250° F. | \$72.38 |
| 5486*** | AMMETER | 60-0-60 AMPS | \$48.25 |
| 5492 | VOLTMETER | 8-18 VOLTS | \$62.02 |

* Uses vehicle's stock sender. #5415 fits most GM. #5416 fits most Ford & Chrysler.
 ** Uses Part # 3262 fuel level sender (not included).
 *** Caution: Use only on alternators with output of 60 amps or less. Higher output alternators must use voltmeter. Must be installed by an experienced mechanic.



GAUGES

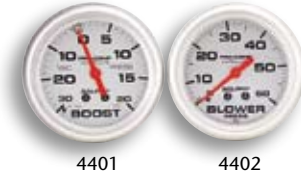
ULTRA-LITE SERIES

2-1/16" & 2-5/8" ULTRA-LITE GAUGES

All aluminum construction greatly reduces the weight of these premium race gauges, making them the hottest new instruments in the racing industry. A clear anodized aluminum face dramatically displays the "easy-to-read" red pointer. Senders included with electrical gauges.

MECHANICAL GAUGES

| 2-1/16" | PRICE | 2-5/8" | PRICE | DESCRIPTION | DETAIL |
|---------|----------|--------|----------|---------------------------|--------------------------|
| 4301 | \$71.49 | 4401 | \$81.93 | BOOST 30" HG/ | 20 PSI |
| - | - | 4402 | \$81.93 | BLOWER PRESSURE | 0-60 PSI |
| 4311 | \$62.59 | 4411 | \$67.69 | FUEL PRESSURE | 0-15 PSI |
| 4312 | \$63.45 | 4412 | \$68.38 | FUEL PRESSURE | 0-100 PSI |
| 4313 | \$176.87 | 4413 | \$190.00 | FUEL PRESSURE W/ ISOLATOR | 0-15 PSI |
| 4321 | \$62.08 | 4421 | \$69.71 | OIL PRESSURE | 0-100 PSI |
| 4322 | \$64.23 | 4422 | \$70.69 | OIL PRESSURE | 0-200 PSI |
| - | - | 4426 | \$112.60 | BRAKE PRESSURE | 0-2000 PSI |
| 4331 | \$87.10 | 4431 | \$107.07 | WATER TEMPERATURE | 140°-280° F, 6' CAP TUBE |
| 4332 | \$90.55 | 4432 | \$109.51 | WATER TEMPERATURE | 120°-240° F, 6' CAP TUBE |
| - | - | 4434 | \$68.62 | WATER TEMPERATURE | 140°-280° F, 3' CAP TUBE |
| - | - | 4435 | \$113.64 | TEMPERATURE | 140°-340° F, 8' CAP TUBE |
| - | - | 4436 | \$72.00 | TEMPERATURE | 140°-340° F, 4' CAP TUBE |
| 4341 | \$88.81 | 4441 | \$109.51 | OIL TEMPERATURE | 140°-280° F, 6' CAP TUBE |
| 4351 | \$92.62 | 4451 | \$113.64 | TRANS TEMPERATURE | 140°-280° F, 8' CAP TUBE |
| - | - | 4484 | \$71.80 | VACUUM | 30" HG |



4401 4402



4411 4412 4422



4431 4432 4435 4341



3262



ELECTRICAL GAUGES

| 2-1/16" | PRICE | 2-5/8" | PRICE | DESCRIPTION | DETAIL |
|---------|---------|--------|---------|--------------------|-------------------------------|
| 4314* | \$53.37 | 4414* | \$64.12 | FUEL LEVEL | 0 OHMS EMPTY/ 90 OHMS FULL |
| 4315* | \$53.37 | 4415* | \$64.12 | FUEL LEVEL | 73 OHMS EMPTY/ 8-12 OHMS FULL |
| 4316** | \$53.37 | 4416** | \$64.12 | FUEL LEVEL | 240 OHMS EMPTY/ 33 OHMS FULL |
| - | - | 3262 | \$46.08 | FUEL LEVEL SENDER | 240 OHMS EMPTY/ 33 OHMS FULL |
| 4327 | \$80.27 | 4427 | \$94.19 | OIL PRESSURE | 0-100 PSI |
| 4337 | \$60.82 | 4437 | \$74.39 | WATER TEMPERATURE | 100°-250° F. |
| 4348 | \$61.64 | 4447 | \$74.39 | OIL TEMPERATURE | 140°-300° F. |
| 4357 | \$62.87 | 4457 | \$74.39 | TRANS TEMPERATURE | 100°-250° F. |
| 4391 | \$53.03 | 4491 | \$62.86 | ELECTRIC VOLTMETER | 8-18 VOLTS |

* Uses vehicle's stock sender. #4314 & 4414 fit most GM. #4315 & 4415 fit most Ford & Chrysler.
 ** Uses #3262 fuel level sender (not included).



4451



4437

SPORT COMP SERIES

5" & 3-3/8" IN-DASH TACHOMETERS & SPEEDOMETERS

Bold, easy to read dial faces and reliable performance match up for a serious competition look. Two sizes are available to match most dashboard size requirements. The tachometer includes a rugged air core meter movement for accurate, fast action response. The speedometer includes a trip odometer to help measure mileage.



3990



3994



3992



3991

| IN-DASH TACHOMETER | | | |
|--------------------|-------------|------------|-----------------|
| PART # | DESCRIPTION | DETAIL | PRICE |
| 3991 | 3-3/8" | 8,000 RPM | \$138.14 |
| 3990 | 5" | 10,000 RPM | \$194.14 |

| IN-DASH SPEEDOMETER | | | |
|---------------------|-------------|---------|-----------------|
| PART # | DESCRIPTION | DETAIL | PRICE |
| 3992 | 3-3/8" | 120 MPH | \$114.69 |
| 3994 | 5" | 120 MPH | \$171.18 |



MAGNETO SIGNAL CONVERTER

The converter box allows any Auto Meter tachometer, Pro-Shift lite, or RPM activated module to be used in most magneto applications.



| PART # | DESCRIPTION | PRICE |
|--------|------------------|----------------|
| 9118 | SIGNAL CONVERTER | \$85.58 |

BRAIDED STAINLESS STEEL HOSE

For use with all mechanical pressure gauges, recommended for use with fuel pressure gauges. Includes #4 line and adapter fittings.



| PART # | LENGTH | PRICE |
|--------|--------|----------------|
| 3227 | 3' | \$48.12 |
| 3228 | 6' | \$78.19 |

GAUGES

SPORT-COMP SERIES



5" SHIFT-LITE TACHOMETERS

When critical shifting is a priority, the Sport Comp Shift-Lite tachometers are the answer. These tachs feature an advanced air core meter movement, which provides accuracy and quicker response. They also include the exclusive rubber-lined shock-strap for vibration-free readings. A bright amber shift-lite signals any pre-selected rpm to notify the driver to shift.

The "Dial-In-Exactness" feature utilizes the tach's fluorescent red pointer to indicate the chosen rpm. By turning a set knob on the tach face the pointer sweeps up or down until the preferred rpm is selected. The rpm can be checked at anytime by simply switching the knob to Set. Part #3906 includes peak rpm memory. The driver can switch to Recall on the tach face and the highest rpm achieved will be displayed by the pointer.

The All Silver Sport-Comp 5" Monster Tach is modeled after the popular Ultra-Lite series, but at a more affordable price. The new "Silver" tach includes silver painted steel mounting cups with an anodized aluminum dial, bezel and control shield - matching the Ultra-Lite hot race look!



| SHIFT-LITE TACHOMETER | | | |
|-----------------------|-------------------|--------|-----------------|
| PART # | DESCRIPTION | RPM | PRICE |
| 3903 | 5" | 10,000 | \$258.43 |
| 3904* | 5" | 10,000 | \$277.67 |
| 3905* | 5" | 8,000 | \$277.67 |
| 3906* | 5" MEMORY | 10,000 | \$389.00 |
| 3910 | 5" SILVER MONSTER | 10,000 | \$229.32 |
| 3911* | 5" SILVER | 10,000 | \$335.79 |

* With dial-in exactness.



5" MONSTER & 3-3/4" SPORT-COMP TACHOMETERS

The "Monster" sized tachometers feature an air core meter movement and advanced electronic circuitry that provide accuracy and fast action response. The 5" dial face provides maximum readability and adjustable red line shift marker helps driver to maintain proper shift points. The rubber lined shock mounting strap absorbs the rough pounding and vibrations in sportsman racing. The 3-3/4" tachometers with the classic "tough" appearance has become the standard competition instrument in automotive motorsports. Also available in the 2-5/8" size for Junior Dragsters.



| STANDARD TACHOMETER | | | |
|---------------------|-------------|------------|-----------------|
| PART # | DESCRIPTION | DETAIL | PRICE |
| 3700 | 3-3/4" | 10,000 RPM | \$161.53 |
| 3780 | 3-3/4" | 8,000 RPM | \$161.53 |

| MINI JUNIOR DRAGSTER TACHOMETER | | | |
|---------------------------------|-------------|------------|-----------------|
| PART # | DESCRIPTION | DETAIL | PRICE |
| 6652* | 2-5/8" | 10,000 RPM | \$152.07 |

* Operates on Briggs & Stratton engine only, requires external dry cell battery.

| MONSTER TACHOMETER | | | |
|--------------------|-------------|------------|-----------------|
| PART # | DESCRIPTION | DETAIL | PRICE |
| 3900 | 5" | 10,000 RPM | \$182.17 |
| 3980 | 5" | 8,000 RPM | \$182.17 |



GAUGES

3-3/8" & 5" IN-DASH TACHOMETERS & SPEEDOMETERS

For custom automotive builders insisting on the finest in racing instruments, these speedometers and tachs complete the Pro Street dashboard. They are designed to match either the Ultra-Lite aluminum gauges or the Pro Comp gauges. The tach includes a rugged air core meter movement for accurate, fast action response. The speedometer includes a trip odometer to help measure mileage. Two sizes are available to match most dashboard size requirements.

| IN-DASH MECHANICAL SPEEDOMETER | | | |
|--------------------------------|-------------|---------|-----------------|
| PART # | DESCRIPTION | DETAIL | PRICE |
| 4492 | 3-3/8" | 120 MPH | \$124.48 |
| 4495 | 5" | 160 MPH | \$192.27 |

| IN-DASH ELECTRICAL TACHOMETER | | | |
|-------------------------------|-------------|--------|-----------------|
| PART # | DESCRIPTION | RPM | PRICE |
| 4497 | 3-3/8" | 10,000 | \$150.83 |
| 4498 | 5" | 10,000 | \$206.90 |

| IN-DASH MECHANICAL SPEEDOMETER | | | |
|--------------------------------|-------------|---------|-----------------|
| PART # | DESCRIPTION | DETAIL | PRICE |
| 5152 | 3-3/8" | 120 MPH | \$117.31 |
| 5154 | 5" | 160 MPH | \$179.31 |

| IN-DASH ELECTRICAL TACHOMETER | | | |
|-------------------------------|-------------|------------|-----------------|
| PART # | DESCRIPTION | DETAIL | PRICE |
| 5161 | 3-3/8" | 10,000 RPM | \$149.44 |
| 5160 | 5" | 10,000 RPM | \$198.73 |



4495

4498



5154

5160



4492

4497

5" IN-DASH MEMORY ULTRA-LITE TACHOMETERS & 5" WATER RESISTANT PRO COMP MEMORY TACH

Ultra-lite aluminum models featuring peak memory recall, allowing drivers to record their highest rpm attained during a race. The dual-range version utilizes a professional dial design that emphasizes the critical racing rpm range.

Water resistant Pro Comp tach models include a high quality water proof switch. These models also include the unique rpm memory feature. Can use mt. strap #3209.

| MEMORY TACHOMETER | | | |
|-------------------|-----------------|--------|-----------------|
| PART # | DESCRIPTION | RPM | PRICE |
| 4494 | 5" SINGLE RANGE | 10,000 | \$331.64 |
| 4499 | 5" DUAL RANGE | 10,000 | \$333.74 |

6801/6802/6803

| WATER RESISTANT IN-DASH MEMORY TACHOMETER | | | |
|---|-------------|--------|-----------------|
| PART # | DESCRIPTION | DETAIL | PRICE |
| 6801 | STD/ ELEC | 10,000 | \$332.27 |
| 6802 | VERTEX OAC | 10,000 | \$226.84 |
| 6803 | SUPER MAG | 10,000 | \$243.72 |



4494



4499

3-3/4" & 5" PRO COMP TACHOMETERS

Pro Comp models deliver accuracy and dependability. 5" monster memory tachs utilize peak rpm memory recall - helpful in setting gear ratios and reviewing drivers shifting accuracy. Available in three models for different racing ignitions.

| PRO COMP TACHOMETER | | | | |
|---------------------|-------------------|------------|--------|-----------------|
| PART # | DESCRIPTION | DETAIL | MEMORY | PRICE |
| 5610 | 3-3/4" 10,000 RPM | STD/ELEC | NO | \$228.96 |
| 5620 | 3-3/4" 10,000 RPM | VERTEX OAC | NO | \$153.09 |
| 6601 | 3-3/4" 10,000 RPM | STD/ELEC | YES | \$319.74 |
| 6809 | 5" 9,000 RPM | STD/ELEC | YES | \$300.02 |
| 6811 | 5" 11,000 RPM | STD/ELEC | YES | \$300.02 |
| 6821 | 5" 11,000 RPM | VERTEX OAC | YES | \$340.62 |



5610



6809

TACHOMETERS

PRO COMP 2 SERIES

5" PRO COMP 2 TACHOMETERS

The Pro Comp 2 tachometers, in traditional black or the all aluminum Ultra-Lite version, include a two-stage shift light. This two-stage light gives the driver two shift settings to allow the first gear a different rpm shift point than the remaining gears. The bright red "Quick Lite" along with the Dial-In-Exactness feature gives instantaneous notice of shift points to provide faster response times during shifts. High and fast revving cars utilize the Dual Range models, which feature a dial face that expands the most critical racing rpm range. Peak rpm Memory Recall reviews the highest rpm achieved during a race.



6851

6853



6855

6856



6852

SHIFT-LITE TACHOMETER

| PART # | RPM | RANGE | DETAIL | PRICE |
|--------|--------|--------|---------------|-----------------|
| 6851 | 9,000 | SINGLE | 5" | \$370.34 |
| 6852 | 9,000 | DUAL | 5" | \$370.34 |
| 6853 | 11,000 | DUAL | 5" | \$309.52 |
| 6854 | 9,000 | DUAL | 5" ULTRA-LITE | \$385.50 |
| 6855 | 11,000 | DUAL | 5" ULTRA-LITE | \$385.50 |
| 6856 | 9,000 | SINGLE | 5" ULTRA-LITE | \$385.50 |

5" PRO COMP 2 PLAYBACK TACHOMETERS

The Pro Comp 2 Playback tachometers allow the replay to be viewed in both half speed or full speed. Drag race teams can store several runs and review them at their convenience later. Specific features include:

Automatic Record Memory Start "ARMS": The recording is started by the normal release of the line-lock or trans-brake so the LED Playback time clock begins recording at the launch.

Two-Stage Shift Light: Allows for the fast revving first gear to be set at a lower rpm than the rest of the shifts. The LED Quick-Lite along with the Dial-In-Exactness feature gives instantaneous notice.

Four Recordings, 40 Seconds Each Memory: Store up to 4 separate runs up to 40 seconds each.

Time Elapsed Clock: Large bright LED indicates time elapsed in .01 second increments during the race or Playback.

Printer Output Capability: With the use of model 9140 Printer Interface, listed below, the recording can be downloaded to a printer.

Peak RPM Control: The highest rpm that occurred can be viewed both during the race or Playback.

Remote Control Module: An optional 8' extension cable, model 5220, allows the control to be moved so the driver or crew can operate the Playback features in a convenient location.

Start-Stop Control: "Start" and "Stop" control buttons permit Playback rpm and ET to be "Frozen" manually, at any point in the run, for easy reading of data.

Peak Shift Catcher: During playback, the tach can automatically freeze the pointer and LED clock at each gear shift. This allows ample time to record shift points and time between each shift.



6861

PLAYBACK TACHOMETER

| PART # | RPM | RANGE | DESCRIPTION | PRICE |
|--------|-------|--------|-------------|-----------------|
| 6861 | 9,000 | SINGLE | - | \$619.67 |
| 6871 | 9,000 | SINGLE | ULTIMATE | \$765.72 |

PRO-SHIFT LITE

The Pro-Shift is an independently operating shift light with advanced microcircuitry. The shift-point is selected by inserting a precisely calibrated rpm module "Pill" into the unit. The amber light activates when the engine reaches the chosen rpm. A variety of clearly marked rpm module "Pills" are available. **Note: #5340 may be adjusted to 4-6-8 cyl. #5341 & #5342 are fixed to 8-cyl. but may be used on 4 or 6-cyl. by using less chip. For example, 4-cyl. installation with 3,000 rpm chip will "light up" at 6,000 rpm.**



5340 / 5342

QUICK-LITE SHIFT-LITE

This LED shift light is a replacement option on Auto Meter tachometers with the larger size light or any other accessory RPM triggering device.



5330

| PART # | DESCRIPTION | DETAIL | PRICE |
|--------|-----------------------|----------------------|----------|
| 5340 | PRO-SHIFT LITE | STD/ELEC | \$129.68 |
| 5342 | PRO-SHIFT LITE | VERTEX OXC/SUPER MAG | \$124.99 |
| 5353* | 3000 RPM MODULE KIT | 3,000-3,800 | \$37.66 |
| 5354* | 4000 RPM MODULE KIT | 4,000-4,800 | \$37.66 |
| 5355* | 5000 RPM MODULE KIT | 5,000-5,800 | \$37.66 |
| 5356* | 6000 RPM MODULE KIT | 6,000-6,800 | \$37.66 |
| 5357* | 7000 RPM MODULE KIT | 7,000-7,800 | \$37.66 |
| 5358* | 8000 RPM MODULE KIT | 8,000-8,800 | \$37.66 |
| 5359* | 9000 RPM MODULE KIT | 9,000-9,800 | \$37.66 |
| 5360* | 10,000 RPM MODULE KIT | 10,000-10,800 | \$37.66 |
| 5361* | 11,000 RPM MODULE KIT | 11,000-11,800 | \$37.66 |
| 5330 | QUICK-LITE SHIFT LITE | - | \$59.80 |

* Each kit contains five chips.



2-5/8" PYROMETER

In professional racing applications, a superior quality Pyrometer is required to measure cylinder head or exhaust gas temperatures. These Pyrometers feature fast responding rugged meter movements. Probe is required for operation of Pyrometer gauge.



6561

| PART # | DESCRIPTION | DETAIL | PRICE |
|--------|------------------------|----------------------|----------|
| 6561 | PYROMETER | 0-1600° F. | \$95.14 |
| 5246 | STAINLESS RACING PROBE | 3/16" DIA., 10' LONG | \$100.05 |
| 5248 | SPARK PLUG PROBE | 6 FT. WIRE | \$91.52 |



5248

TACH PLAYBACK RECORDER & PRINTER INTERFACE

Converts any Auto Meter tachometer, except Magneto type, into a Playback recording device. Full runs can be replayed at full or half speed and viewed on a LED clock (included).

Features include:

- ARMS "Automatic Record Memory Start"
- Time Elapsed Clock
- Four Recordings, 40 Seconds Each Memory Block
- Printer Output Capability

The Printer Interface directly downloads a Playback tach, Playback Recorder, or LTM to a printer without the need for a computer. Printer requirements are for almost any format emulating the Epson 9 or 24 pin dot matrix. Printer will operate with the 9140 Interface.



9140

| PART # | DESCRIPTION | PRICE |
|--------|--|----------|
| 9150 | TACH PLAYBACK RECORDER | \$381.22 |
| 9140 | PRINTER INTERFACE FOR PLAYBACK TACH/RECORDER | \$270.95 |

9150

PRO LIGHT / GAUGE ACCESSORIES

PRO-LITE WARNING LIGHT MINI PRO LIGHT

Gives you unmistakable warning in the midst of racing action when there is no time to monitor gauges - 1-5/8" dia. lens x 5" long. Mini Pro-Lite measures 5/8" dia. x 3-1/2" long. **Note: Pro-Lite should be used in conjunction with gauge to give first alert to potential problems.**



3240



3238

3239

| PART # | DESCRIPTION | DETAIL | PRICE |
|--------|-----------------|-------------|---------|
| 3238 | MINI PRO-LITE | SILVER | \$50.43 |
| 3239 | MINI PRO-LITE | BLACK | \$49.56 |
| 3240 | PRO-LITE | RED LENS | \$48.55 |
| 3241 | PRESSURE SENDER | 18 PSI | \$30.90 |
| 3242 | PRESSURE SENDER | 30 PSI | \$30.90 |
| 3243 | PRESSURE SENDER | 50 PSI | \$30.90 |
| 3246 | TEMP SENDER | 187°-203° F | \$34.27 |
| 3247 | TEMP SENDER | 210°-230° F | \$34.27 |
| 3250 | LENS KIT | BLUE | \$9.33 |
| 3251 | LENS KIT | YELLOW | \$9.33 |
| 3252 | LENS KIT | RED | \$9.33 |



3241
3242
3243



3246/3247



3250



PRO-CONTROL RPM CONTROL UNIT

Can be used as rev-limiter, air shift activator or nitrous oxide trigger. As rev-limiter, it guards against over-revving by allowing 100% power until reaching the pre-set rpm level. Models without reset button interrupt ignition power for a fraction of a second. Models with reset button are for super-charged (blown) engines. Reset unit shuts off engine completely.



| IGNITION INTERRUPTER WITHOUT RESET | | | |
|------------------------------------|-------------------------|--------------|----------|
| PART # | IGNITION | DETAIL | PRICE |
| 5301 | STD/ELEC | - | \$195.93 |
| 5302 | VERTEX OAC/ MSD PRO MAG | - | \$197.89 |
| 5309 | VERTEX OXC/ SUPER MAG | BYPASS DELAY | \$277.79 |

| SHUT DOWN WITH RESET | | | |
|----------------------|-----------------------|--------------|----------|
| PART # | IGNITION | DETAIL | PRICE |
| 5306 | VERTEX OXC/ SUPER MAG | BYPASS DELAY | \$245.52 |

NOTE: OAC has internal coil, OXC has external coil

TIRE PRESSURE GAUGE

Accurate repetitive readings can be recorded with this rugged Auto Meter tire gauge. Wide range of operation, 0 - 60#, holds reading until reset button is depressed.



| PART # | DESCRIPTION | PRICE |
|--------|---------------------|---------|
| 2343 | TIRE PRESSURE GAUGE | \$29.43 |





A



B



2242



2254 / 2258 / 2259

| 2-1/16" GAUGE ACCESSORIES | | | | |
|---------------------------|--------|-----------------------|----------------------------|---------|
| REF | PART # | DESCRIPTION | DETAIL | PRICE |
| A | 2203 | CHROME CUP | - | \$32.02 |
| B | 2204 | BLACK CUP | - | \$19.68 |
| - | 2237 | ALUM GAUGE PANEL | 2-HOLE BLACK | \$16.52 |
| - | 2242 | REPL SENDER OIL PRESS | ELEC, 100# | \$46.03 |
| - | 2254 | REPL SENDER TEMP | ELEC, PRE-1995 | \$16.73 |
| - | 2258 | REPL SENDER TEMP | ELEC, 1995 & AFTER | \$16.73 |
| - | 2259 | REPL SENDER TEMP | CYL HEAD, 340 1995 & AFTER | \$12.41 |

| 2-5/8" GAUGE ACCESSORIES | | | | |
|--------------------------|--------|--------|------------------|---------|
| REF | PART # | CUP | GAUGES | PRICE |
| A | 3201 | CHROME | ALL ELEC | \$33.56 |
| B | 3202 | BLACK | ALL ELEC | \$19.95 |
| A | 3203 | CHROME | MECH TEMP/ PRESS | \$33.56 |
| B | 3204 | BLACK | MECH TEMP/ PRESS | \$19.95 |
| A | 5201* | CHROME | LIQUID FILLED | \$32.80 |
| B | 5202* | BLACK | LIQUID FILLED | \$23.49 |

* Fits both pressure or temp gauges.



3226



2265



2286 / 2287



3209

| MISCELLANEOUS GAUGE ACCESSORIES | | | | |
|---------------------------------|----------------------|-----------------------------|---------|-------------|
| PART # | DESCRIPTION | DETAIL | PRICE | |
| 2265 | ADAPTER | 1/8 NPT FEMALE TO 10MM MALE | \$12.16 | |
| 2286 | TRANS TEMP ADAPTER | 3/8" O.D. TUBE | \$47.22 | |
| 2287 | TRANS TEMP ADAPTER | 5/16" O.D. TUBE | \$47.22 | |
| 3209 | TACH SHOCK STRAP KIT | - | \$17.76 | |
| 3214 | (3) BULB BOOTS | RED | \$3.91 | 3214 / 3215 |
| 3215 | (3) BULB BOOTS | GREEN | \$3.91 | |
| 3226 | NYLON TUBING KIT | 1/8" DIA./12 FT. | \$11.45 | |
| 3257 | 3' EXTENSION WIRE | QUICK LITE | \$21.64 | 3257 |
| 3262 | FUEL GAUGE SENDER | 240 OHMS EMPTY/33 OHMS FULL | \$46.08 | |
| 5210 | INDUCTIVE TRIGGER | - | \$78.02 | 5210 |
| 5220 | 8' EXTENSION WIRE | PLAYBACK TACHS | \$60.11 | |



3214 / 3215



3257



3262



5210