

# TUBING/PLATE

## ALUMINUM PLATE

Aluminum plate is 6061-T6, ideal for fabricating mounting plates and lightweight brackets.



Aluminum

PART #	SIZE	THICKNESS	#/ SQ. FT.	PRICE
6061-18	12" x 12"	.125"	1.76	<b>\$13.01</b>
6061-316	12" x 12"	.190"	2.68	<b>\$19.82</b>
6061-14	12" x 12"	.250"	3.52	<b>\$25.14</b>
6061-38	12" x 12"	.375"	5.36	<b>\$56.54</b>
C52-302	24" x 24"	.250"	3.52	<b>\$93.95</b>
C52-303	24" x 24"	.375"	5.36	<b>\$139.95</b>

## DROP BOX

An assortment of our chromoly "drop" pieces of tubing. Each 10# box may contain an assortment of round, square, rectangle or streamline tubing, and bar or plate. These drop boxes are very useful for a variety of projects. Subject to availability.



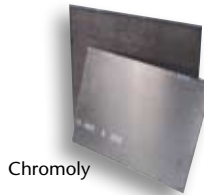
PART #	DESCRIPTION	PRICE
C63-001	CHROMOLY DROP BOX	<b>\$29.95</b>

## ALUMINUM DROP BOX

This assortment box of aluminum contains 10# of random pieces of plate, bar, or tubing. The aluminum alloy is undetermined. These drop boxes are useful for a variety of projects. Subject to availability.



PART #	DESCRIPTION	PRICE
C63-004	Aluminum DROP BOX	<b>\$29.95</b>



Chromoly

## CHROMOLY PLATE

Chromoly plate is aircraft 4130 condition N, perfect for fabbing those custom brackets for your project.

PART #	SIZE	THICKNESS	#/ SQ. FT.	PRICE
4130-116-9-12	9" x 12"	.063"	2.57	<b>\$18.96</b>
4130-116-18-36	18" x 36"	.063"	2.57	<b>\$113.76</b>
4130-116-18-72	18" x 72"	.063"	2.57	<b>\$227.52</b>
4130-332-9-12	9" x 12"	.090"	3.67	<b>\$24.21</b>
4130-332-18-36	18" x 36"	.090"	3.67	<b>\$145.26</b>
4130-332-18-72	18" x 72"	.090"	3.67	<b>\$290.52</b>
4130-18-9-12	9" x 12"	.125"	5.1	<b>\$35.30</b>
4130-18-18-36	18" x 36"	.125"	5.1	<b>\$211.80</b>
4130-18-18-72	18" x 72"	.125"	5.1	<b>\$423.60</b>
4130-316-9-12	9" x 12"	.190"	7.75	<b>\$41.35</b>
4130-316-18-36	18" x 36"	.190"	7.75	<b>\$248.10</b>
4130-316-18-72	18" x 72"	.190"	7.75	<b>\$496.20</b>
4130-14-9-12	9" x 12"	.250"	10.21	<b>\$50.53</b>
4130-14-18-36	18" x 36"	.250"	10.21	<b>\$303.18</b>
4130-14-18-72	18" x 72"	.250"	10.21	<b>\$606.36</b>

Note: Cut tolerance on this material is + or - 1/4".

## WELDING FILLER ROD

This #65 triple deoxidized filler rod is the choice of many leading chassis builders for chromoly and mild steel tig welding. Aluminum filler rod is available for two different applications.



#65 FILLER ROD				
PART #	SIZE	APPLICATION	# PCS/ BUNDLE	PRICE
C73-002	1/16" x 36"	*	34	<b>\$5.99</b>
C73-004	3/32" x 36"	*	14	<b>\$5.99</b>

ALUMINUM FILLER ROD				
PART #	SIZE	APPLICATION	# PCS/ BUNDLE	PRICE
C73-006	1/16" x 36"	3003 ALUM ALLOYS	75	<b>\$13.99</b>
C73-007	3/32" x 36"	3003 ALUM ALLOYS	40	<b>\$13.99</b>
C73-008	1/16" x 36"	5052, 6061 ALUM ALLOYS, 6061 TO 3003, MOST CASTINGS	75	<b>\$13.99</b>
C73-009	3/32" x 36"	5052, 6061 ALUM ALLOYS, 6061 TO 3003, MOST CASTINGS	40	<b>\$13.99</b>

\*When properly used this material is compatible with mild steel to mild steel, chromoly to chromoly, and mild steel to chromoly.

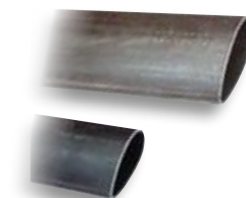
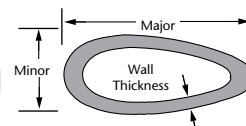
Note: All welding should be performed by a trained and experienced welder.

## TUBING

### STREAMLINE CHROMOLY TUBING

PART #	MAJOR	MINOR	WALL THICKNESS	LBS. PER FOOT	1'-16' (PER FOOT)	1 FULL LENGTH (PER FOOT)	2 FULL LENGTHS (PER FOOT)	3-4 FULL LENGTHS (PER FOOT)	5+ FULL LENGTHS (PER FOOT)
41-1012-428-035	1.012"	.428"	.035"	.2687	\$15.48	\$12.48	\$11.64	\$10.92	\$10.08
41-1180-500-035	1.180"	.500"	.035"	.3140	\$16.56	\$13.20	\$12.36	\$11.52	\$10.80
41-1349-571-049	1.349"	.571"	.049"	.4977	\$24.96	\$20.04	\$18.72	\$17.52	\$16.20
41-1685-714-049	1.685"	.714"	.049"	.6285	\$27.96	\$22.32	\$21.00	\$19.56	\$18.12
41-1685-714-065	1.685"	.714"	.065"	.6914	\$30.48	\$24.36	\$22.92	\$21.36	\$19.80
41-2023-857-049	2.023"	.857"	.049"	.7593	\$37.22	\$29.88	\$27.96	\$26.16	\$24.24
41-2023-857-065	2.023"	.857"	.065"	.9962	\$30.84	\$24.60	\$23.04	\$21.60	\$20.04
41-2360-1-049	2.360"	1.0"	.049"	.8902	\$53.64	\$42.96	\$40.20	\$37.56	\$34.92
41-2360-1-058	2.360"	1.0"	.058"	1.170	\$74.52	\$59.64	\$55.92	\$52.20	\$48.48
41-2697-1143-049	2.697"	1.143"	.049"	1.021	\$45.60	\$36.48	\$34.20	\$31.92	\$29.64
41-3372-1429-049	3.372"	1.429"	.049"	1.283	\$45.96	\$36.72	\$34.44	\$32.16	\$29.88

Streamline tubing random length is 10'-24'. See notes on page 4 regarding lengths and shipping.



### SQUARE & RECTANGULAR CHROMOLY TUBING

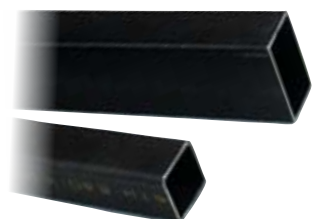
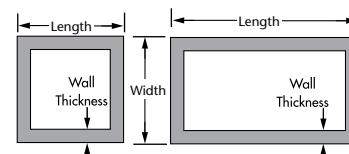
#### SQUARE

PART #	SIZE	WALL THICKNESS	LBS. PER FOOT	1'-16' (PER FOOT)	1 FULL LENGTH (PER FOOT)	2 FULL LENGTHS (PER FOOT)	3-4 FULL LENGTHS (PER FOOT)	5+ FULL LENGTHS (PER FOOT)
41-34-34-058	3/4" x 3/4"	.058"	0.5454	\$9.72	\$7.80	\$7.32	\$6.84	\$6.36
41-1-1-065	1" x 1"	.065"	0.8265	\$9.84	\$7.92	\$7.44	\$6.96	\$6.48

#### RECTANGULAR

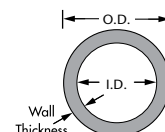
PART #	SIZE	WALL THICKNESS	LBS. PER FOOT	1'-16' (PER FOOT)	1 FULL LENGTH (PER FOOT)	2 FULL LENGTHS (PER FOOT)	3-4 FULL LENGTHS (PER FOOT)	5+ FULL LENGTHS (PER FOOT)
41-112-1-065	1-1/2" x 1"	.065"	1.0480	\$12.12	\$9.72	\$9.12	\$8.52	\$7.92
41-134-1-065	1-3/4" x 1"	.065"	1.1580	\$18.12	\$14.52	\$13.56	\$12.60	\$11.76
41-2-1-065	2" x 1"	.065"	1.2680	\$13.56	\$10.80	\$10.20	\$9.48	\$8.76

Only sizes above available. See notes on page 4 regarding lengths and shipping.



### ROUND TUBING

We offer a large, in stock selection of Threadable, Mild Steel, and Aluminum Round Tubing. Use chart at right to determine O.D. and I.D. size requirements.



### THREADABLE (1020-1026 DOM MILD STEEL)

PART #	O.D.	WALL THICKNESS	LBS. PER TAP SIZE	PER FOOT	1'-16' (PER FOOT)	1 FULL LENGTH (PER FOOT)	2 FULL LENGTHS (PER FOOT)	3-4 FULL LENGTHS (PER FOOT)	5+ FULL LENGTHS (PER FOOT)
10-34-156	3/4"	.156"	1/2-20 NF*	.9897	\$5.52	\$4.44	\$4.20	\$3.84	\$3.60
10-78-156	7/8"	.156"	5/8-18 NF**	1.198	\$8.16	\$6.48	\$6.12	\$5.76	\$5.28
10-1-156	1"	.156"	3/4-16 NF	1.406	\$7.08	\$5.64	\$5.28	\$4.92	\$4.56

\* Requires pilot drilling to 29/64".

\*\* Requires pilot drilling to 37/64".

Random length is 17' - 24'. See notes on page 4 regarding lengths and shipping.

### MILD STEEL (1010-WELDED SEAM)

PART #	O.D.	WALL THICKNESS	I.D.	LBS. PER FOOT	1'-16' (PER FOOT)	1 FULL LENGTH (PER FOOT)	2 FULL LENGTHS (PER FOOT)	3-4 FULL LENGTHS (PER FOOT)	5+ FULL LENGTHS (PER FOOT)
10-1-065	1"	.065"	.870"	0.6491	\$2.88	\$2.28	\$2.16	\$2.04	\$1.92
10-114-083	1-1/4"	.083"	1.084"	1.034	\$2.28	\$1.80	\$1.68	\$1.56	\$1.44
10-112-095	1-1/2"	.095"	1.310"	1.426	\$3.60	\$2.88	\$2.76	\$2.52	\$2.40
10-158-134*	1-5/8"	.134"	1.357"	2.134	\$9.12	\$7.32	\$6.84	\$6.36	\$5.88

\* This material is 1020-1026 DOM

Random length is 17' - 24'. See notes on page 4 regarding lengths and shipping.

### ALUMINUM (6061-T6)

PART #	O.D.	WALL THICKNESS	I.D.	LBS. PER FOOT	1'-11' (PER FOOT)	1 FULL LENGTH (PER FOOT)	2 FULL LENGTHS (PER FOOT)	3-4 FULL LENGTHS (PER FOOT)	5+ FULL LENGTHS (PER FOOT)
60-38-058	3/8"	.058"	.259"	0.0694	\$1.56	\$1.20	\$1.20	\$1.08	.96
60-12-058	1/2"	.058"	.384"	0.0962	\$2.04	\$1.68	\$1.56	\$1.44	\$1.32
60-34-058	3/4"	.058"	.643"	0.1506	\$2.64	\$2.16	\$2.04	\$1.80	\$1.68
60-78-065	7/8"	.065"	.745"	0.1979	\$3.00	\$2.40	\$2.28	\$2.16	\$1.92
60-1-065	1"	.065"	.870"	0.2295	\$3.24	\$2.64	\$2.40	\$2.28	\$2.16
60-1-083	1"	.083"	.834"	0.2866	\$3.72	\$3.00	\$2.76	\$2.64	\$2.40
60-2-065	2"	.065"	1.870"	0.4743	\$6.60	\$5.28	\$4.92	\$4.68	\$4.32
60-212-065	2-1/2"	.065"	2.370"	0.5196	\$8.76	\$6.96	\$6.60	\$6.12	\$5.64

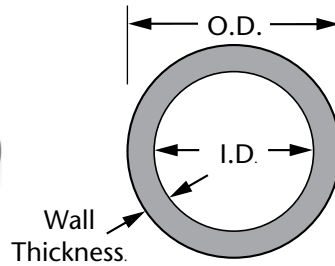
Standard full length is 12', may be cut to order.

## TUBING

We specialize in "Domestic Drawn" premium material, processed in the U.S.A.

### ROUND CHROMOLY TUBING

In addition to our specialty shapes, we offer a large selection of premium quality round chromoly tubing. The round chromoly is 41 30 condition N and built to MIL T 6736 B specs. We purchase this material in large quantities and pass the savings on to you. Our large in stock inventory is priced right for small orders with additional discounts on full lengths, quantity discounts as listed. See page 4 for information on lengths and shipping.



PART #	O.D.	WALL THICKNESS	I.D.	LBS. PER FOOT	1'-16' (PER FOOT)	1 FULL LENGTH (PER FOOT)	2 FULL LENGTHS (PER FOOT)	3-4 FULL LENGTHS (PER FOOT)	5+ FULL LENGTHS (PER FOOT)
41-516-035	5/16"	.035"	.243"	0.1039	\$4.56	\$3.60	\$3.48	\$3.24	\$3.00
41-38-035	3/8"	.035"	.305"	0.1271	\$4.44	\$3.60	\$3.36	\$3.12	\$2.88
41-38-049	3/8"	.049"	.277"	0.1706	\$4.44	\$3.60	\$3.36	\$3.12	\$2.88
41-38-058	3/8"	.058"	.259"	0.1964	\$4.68	\$3.72	\$3.48	\$3.24	\$3.00
41-12-035	1/2"	.035"	.430"	0.1738	\$4.20	\$3.36	\$3.12	\$3.00	\$2.76
41-12-049	1/2"	.049"	.402"	0.236	\$3.24	\$2.64	\$2.40	\$2.28	\$2.16
41-12-058	1/2"	.058"	.384"	0.2738	\$4.32	\$3.48	\$3.24	\$3.00	\$2.88
41-12-065	1/2"	.065"	.370"	0.302	\$4.56	\$3.60	\$3.36	\$3.12	\$2.88
41-12-083	1/2"	.083"	.334"	0.3696	\$3.72	\$2.88	\$2.76	\$2.52	\$2.40
41-12-120	1/2"	.120"	.260"	0.487	\$7.08	\$5.64	\$5.28	\$4.92	\$4.56
41-58-035	5/8"	.035"	.555"	0.2205	\$2.40	\$1.92	\$1.80	\$1.68	\$1.56
41-58-049	5/8"	.049"	.527"	0.3014	\$3.12	\$2.52	\$2.40	\$2.16	\$2.04
41-58-058	5/8"	.058"	.509"	0.3512	\$3.84	\$3.12	\$2.88	\$2.64	\$2.52
41-58-065	5/8"	.065"	.495"	0.3888	\$3.72	\$2.88	\$2.76	\$2.52	\$2.40
41-58-083	5/8"	.083"	.459"	0.4805	\$5.04	\$4.08	\$3.84	\$3.60	\$3.36
41-58-120	5/8"	.120"	.385"	0.6472	\$7.56	\$6.00	\$5.64	\$5.28	\$4.92
41-34-035	3/4"	.035"	.680"	0.2673	\$2.64	\$2.16	\$2.04	\$1.92	\$1.80
41-34-049	3/4"	.049"	.652"	0.3668	\$3.36	\$2.76	\$2.52	\$2.40	\$2.16
41-34-058	3/4"	.058"	.634"	0.4287	\$4.20	\$3.36	\$3.12	\$2.88	\$2.76
41-34-065	3/4"	.065"	.620"	0.4755	\$4.80	\$3.84	\$3.60	\$3.36	\$3.12
41-34-083	3/4"	.083"	.584"	0.5913	\$3.96	\$3.12	\$3.00	\$2.76	\$2.52
41-34-120	3/4"	.120"	.510"	0.8074	\$5.40	\$4.32	\$4.08	\$3.72	\$3.48
41-78-035	7/8"	.035"	.805"	0.314	\$3.00	\$2.40	\$2.28	\$2.04	\$1.92
41-78-049	7/8"	.049"	.777"	0.4323	\$3.12	\$2.52	\$2.28	\$2.16	\$2.04
41-78-058	7/8"	.058"	.759"	0.5061	\$4.20	\$3.36	\$3.12	\$3.00	\$2.76
41-78-065	7/8"	.065"	.745"	0.5623	\$3.96	\$3.12	\$3.00	\$2.76	\$2.52
41-78-083	7/8"	.083"	.709"	0.7021	\$4.08	\$3.24	\$3.12	\$2.88	\$2.64
41-78-120	7/8"	.120"	.635"	0.9676	\$6.72	\$5.40	\$5.04	\$4.68	\$4.44
41-1-035	1"	.035"	.930"	0.3607	\$3.48	\$2.76	\$2.64	\$2.40	\$2.28
41-1-049	1"	.049"	.902"	0.4977	\$3.84	\$3.12	\$2.88	\$2.64	\$2.52
41-1-058	1"	.058"	.884"	0.5835	\$3.96	\$3.24	\$3.00	\$2.76	\$2.64
41-1-065	1"	.065"	.870"	0.6491	\$3.96	\$3.24	\$3.00	\$2.76	\$2.64
41-1-083	1"	.083"	.834"	0.8129	\$4.92	\$3.96	\$3.72	\$3.48	\$3.24
41-1-095	1"	.095"	.810"	0.9182	\$5.52	\$4.44	\$4.08	\$3.84	\$3.60
41-1-120	1"	.120"	.760"	1.128	\$6.12	\$4.80	\$4.56	\$4.20	\$3.96
41-118-049	1-1/8"	.049"	1.027"	0.5631	\$3.96	\$3.12	\$3.00	\$2.76	\$2.52
41-118-058	1-1/8"	.058"	1.009"	0.6609	\$4.56	\$3.60	\$3.36	\$3.12	\$2.88
41-118-065	1-1/8"	.065"	.995"	0.7359	\$4.92	\$3.96	\$3.72	\$3.48	\$3.24
41-118-083	1-1/8"	.083"	.959"	0.9237	\$4.68	\$3.72	\$3.48	\$3.24	\$3.00
41-118-095	1-1/8"	.095"	.935"	1.045	\$7.08	\$5.64	\$5.28	\$4.92	\$4.56
41-118-120	1-1/8"	.120"	.885"	1.288	\$9.00	\$7.20	\$6.72	\$6.24	\$5.88



## ROUND CHROMOLY TUBING (CONTINUED)

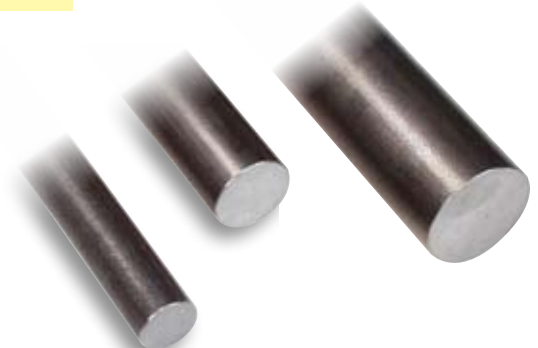
PART #	O.D.	WALL THICKNESS	I.D.	LBS. PER FOOT	1'-16' (PER FOOT)	1 FULL LENGTH (PER FOOT)	2 FULL LENGTHS (PER FOOT)	3-4 FULL LENGTHS (PER FOOT)	5+ FULL LENGTHS (PER FOOT)
41-114-049	1-1/4"	.049"	1.152"	0.6285	\$4.08	\$3.24	\$3.12	\$2.88	\$2.64
41-114-058	1-1/4"	.058"	1.134"	0.7384	\$4.80	\$3.84	\$3.60	\$3.36	\$3.12
41-114-065	1-1/4"	.065"	1.120"	0.8226	\$5.04	\$4.08	\$3.84	\$3.60	\$3.36
41-114-083	1-1/4"	.083"	1.084"	1.0340	\$5.04	\$4.08	\$3.84	\$3.60	\$3.36
41-114-095	1-1/4"	.095"	1.060"	1.1720	\$6.48	\$5.16	\$4.80	\$4.56	\$4.20
41-114-120	1-1/4"	.120"	1.010"	1.4480	\$6.36	\$5.04	\$4.80	\$4.44	\$4.08
41-138-049	1-3/8"	.049"	1.277"	0.6939	\$4.68	\$3.72	\$3.48	\$3.24	\$3.00
41-138-058	1-3/8"	.058"	1.259"	0.8158	\$4.20	\$3.36	\$3.12	\$3.00	\$2.76
41-138-065	1-3/8"	.065"	1.245"	0.9094	\$4.92	\$3.96	\$3.72	\$3.48	\$3.24
41-138-083	1-3/8"	.083"	1.209"	1.1450	\$6.12	\$4.80	\$4.56	\$4.20	\$3.96
41-138-095	1-3/8"	.095"	1.185"	1.2990	\$5.76	\$4.68	\$4.32	\$4.08	\$3.72
41-138-120	1-3/8"	.120"	1.135"	1.6080	\$10.56	\$8.40	\$7.92	\$7.32	\$6.84
41-112-049	1-1/2"	.049"	1.402"	0.7593	\$9.60	\$7.68	\$7.20	\$6.72	\$6.24
41-112-058	1-1/2"	.058"	1.384"	0.8932	\$5.40	\$4.32	\$4.08	\$3.72	\$3.48
41-112-065	1-1/2"	.065"	1.370"	0.9962	\$6.72	\$5.40	\$5.04	\$4.80	\$4.44
41-112-083	1-1/2"	.083"	1.334"	1.2560	\$6.96	\$5.52	\$5.16	\$4.80	\$4.44
41-112-095	1-1/2"	.095"	1.310"	1.4260	\$6.12	\$4.80	\$4.56	\$4.20	\$3.96
41-112-120	1-1/2"	.120"	1.260"	1.7690	\$11.52	\$9.24	\$8.64	\$8.04	\$7.44
41-158-065	1-5/8"	.065"	1.495"	1.0830	\$7.08	\$5.64	\$5.28	\$4.92	\$4.56
41-158-083	1-5/8"	.083"	1.459"	1.3670	\$6.84	\$5.40	\$5.04	\$4.80	\$4.44
41-158-120	1-5/8"	.120"	1.385"	1.9290	\$10.44	\$8.40	\$7.80	\$7.32	\$6.84
41-134-083	1-3/4"	.083"	1.584"	1.4780	\$9.00	\$7.20	\$6.84	\$6.36	\$5.88
41-134-120	1-3/4"	.120"	1.510"	2.0890	\$10.68	\$8.64	\$8.04	\$7.56	\$6.96

Due to the unstable nature of the steel market, all tubing prices are subject to change without notice.

## ROUND CHROMOLY BAR

This material is condition N, 4130 chromoly bar. Priced by the foot. A full length measures 12' long. May be cut to order.

PART #	DIA.	LBS. PER FOOT	PRICE (PER FOOT)
41B-58	5/8"	0.751	\$5.52
41B-34	3/4"	1.081	\$6.00
41B-78	7/8"	1.472	\$8.76
41B-1	1"	1.922	\$12.24
41B-118	1-1/8"	2.434	\$14.16
41B-114	1-1/4"	3.004	\$16.20



### SHIPPING INFORMATION

## NOTE ON LENGTHS AND SHIPPING

### FULL LENGTH DISCOUNTS

The special discount pricing listed is available when purchasing full lengths. Different sizes (part #'s) cannot be mixed to receive the multiple length discount. Chromoly tubing comes in varying random lengths ranging from 17' to 24' long. If you order 3 "Full Lengths" of tubing, you may receive 3 different lengths that are between 17' to 24' long. We cannot guarantee specific lengths for your order. (Example: Piece #1 is 18'-2", Piece #2 is 20'-1", Piece #3 is 23'-6") Full Random Lengths must be taken to receive full length pricing.

### UPS SHIPPING

UPS is usually the fastest and most economical way for us to ship. When taking advantage of full length discount pricing, specify "Full Length cut 8' plus drop". We can also cut to lesser lengths within reason. The additional UPS handling charges may be avoided with orders cut 48" or shorter.

### TRUCK SHIPPING

Tubing over 8' long requires truck shipment. When using truck shipment, you will receive full random uncut lengths. All orders are carefully packaged for safe shipment. We work hard to find the lowest possible shipping cost for all truck orders.

### FREE FREIGHT

All tubing orders totaling \$2300 or more are eligible for pre-paid freight, per our routing to one destination in the continental United States. This program is subject to invoice payment within the account terms.